



Townmead Road, SW6

£507 Per week

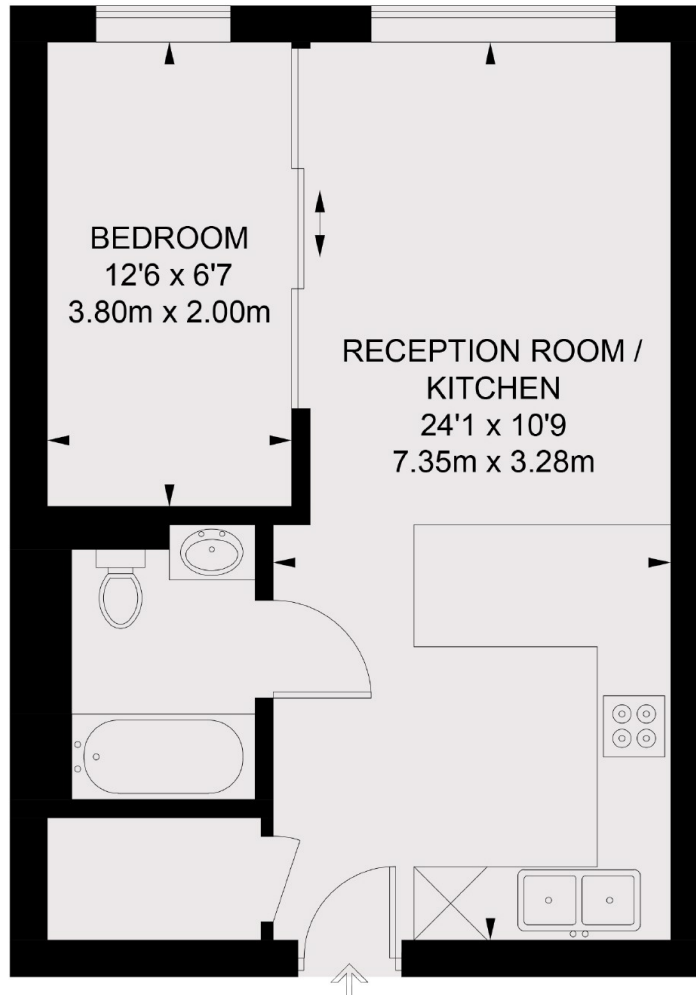
A stunning Manhattan style one bedroom apartment within the sought after Imperial Wharf development. On the 2nd floor the flat has an open plan kitchen and living room, one bathroom and ample storage throughout.

Imperial Wharf overground station is approximately 500 yards from the development and the river bus service provides access to Blackfriars and Putney Piers.

Features

- One Bedroom
- Water Rates Included
- 3rd October
- Lift
- 24 Concierge
- Imperial Wharf

Townmead Road, London, SW6



SECOND FLOOR

TOTAL APPROX. FLOOR AREA 405 SQ. FT. (37.6 SQ. M.)