



Paveley Drive, SW11

£577 Per week

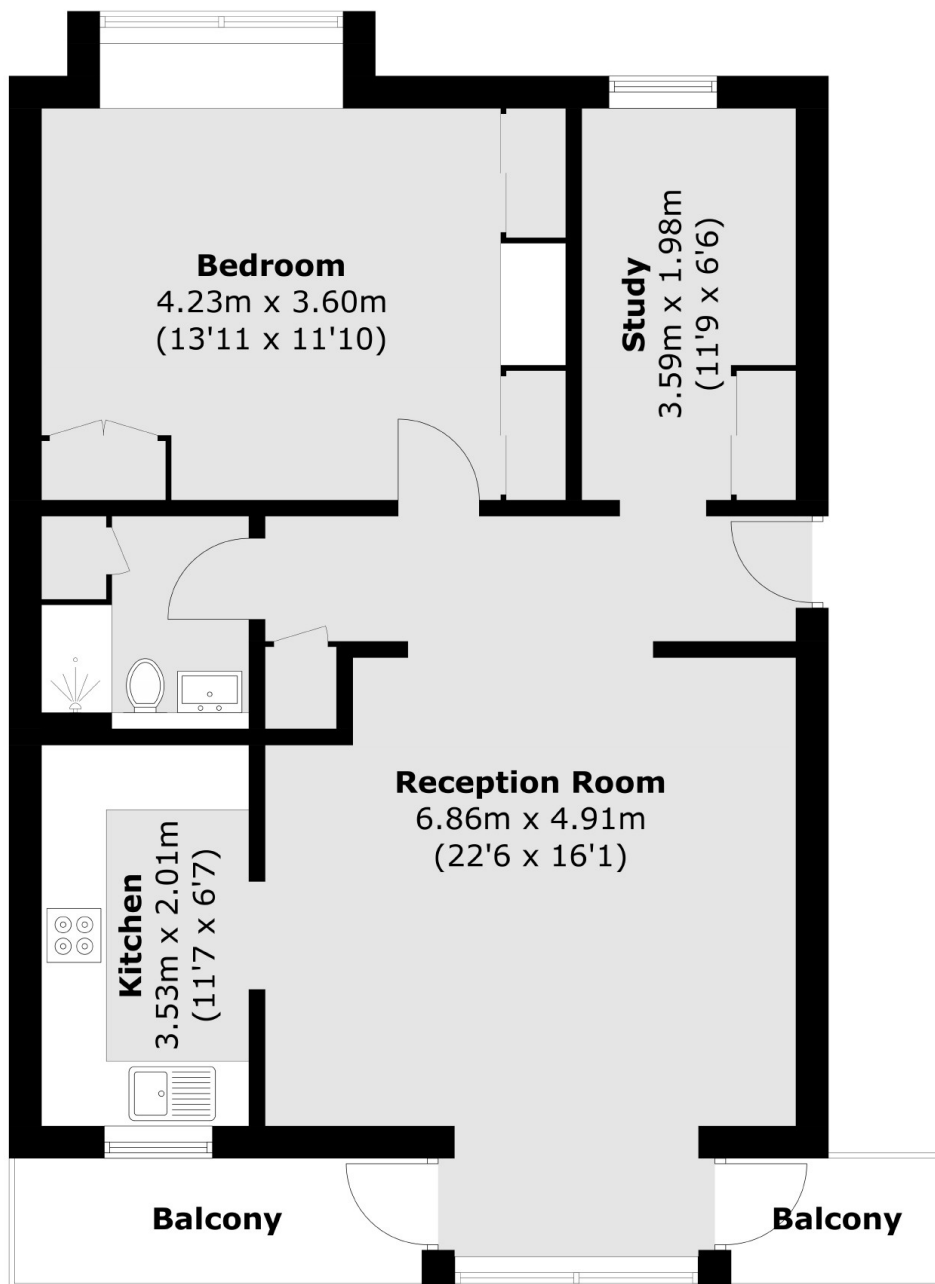
A beautiful two double bedroom, one bathroom flat with a spacious open plan reception room. The property comes with one parking space.

Paveley Drive is located 0.2 miles from the River Thames and less than a mile from the King's Road. Benefitting from good transport links across London.

Features

- Two Bedrooms
- One Bathroom
- Private Balcony
- Flexible Furnishings
- Private Parking Space
- Communal Gardens

Paveley Drive, London, SW11



First Floor

Total area (approx.): 68.9 sq. m (741.6 sq. ft)
Balcony: 6.7 sq. m (72.1 sq. ft)