

## Central Avenue, SW6

£2,306 Per week

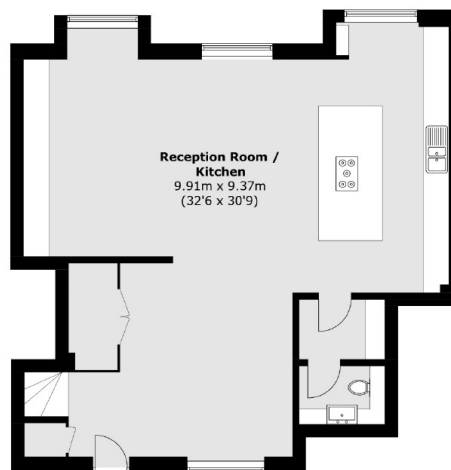
A spectacular five bedroom triplex apartment, with four bathrooms in this secure and sought after riverside development.

Fulham Riverside is perfectly located between South Park and Imperial Park, moments away from amenities such as Sainsburys, local cafés and restaurants and the prestigious Hurlingham Club

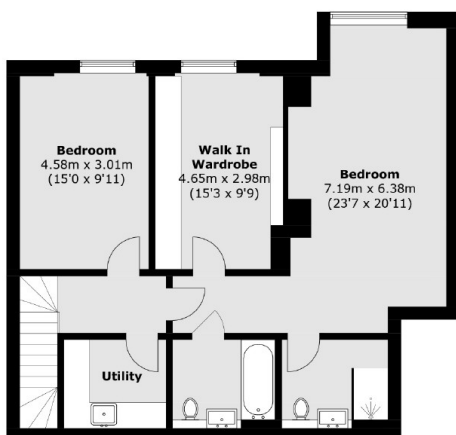
### Features

- Five Double Bedrooms
- Four Bathrooms
- Private Terrace
- Secure Parking
- 24 Hour Concierge
- Gym Access

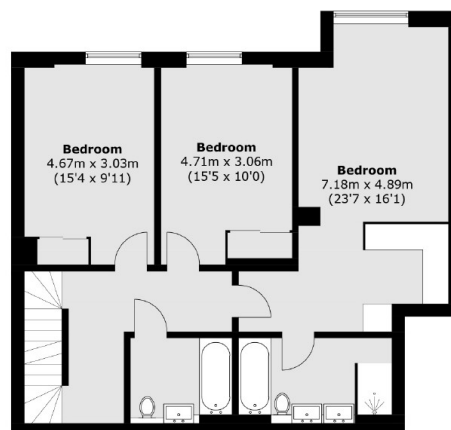
# Central Avenue, London, SW6



**Fourth Floor**



**Second Floor**



**Third Floor**

Total area (approx.): 249.3 sq. m (2683.3 sq. ft)