

Central Avenue, SW6

£2,538 Per week

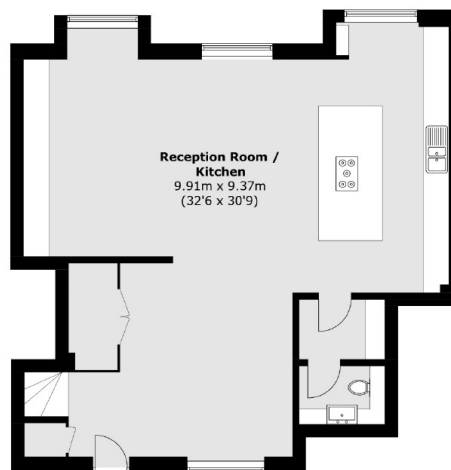
A spectacular five bedroom triplex apartment, with four bathrooms in this secure and sought after riverside development.

Fulham Riverside is perfectly located between South Park and Imperial Park, moments away from amenities such as Sainsburys, local cafés and restaurants and the prestigious Hurlingham Club

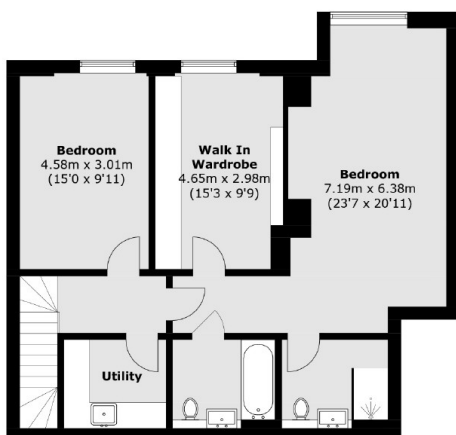
Features

- Five Double Bedrooms
- Four Bathrooms
- Private Terrace
- Secure Parking
- 24 Hour Concierge
- Gym Access

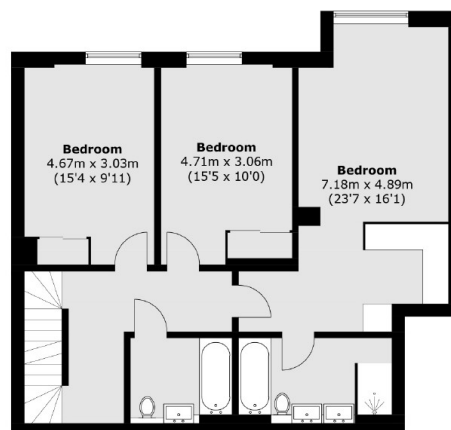
Central Avenue, London, SW6



Fourth Floor



Second Floor



Third Floor

Total area (approx.): 249.3 sq. m (2683.3 sq. ft)