



## Bridgewater Avenue, SW6

£900 Per week

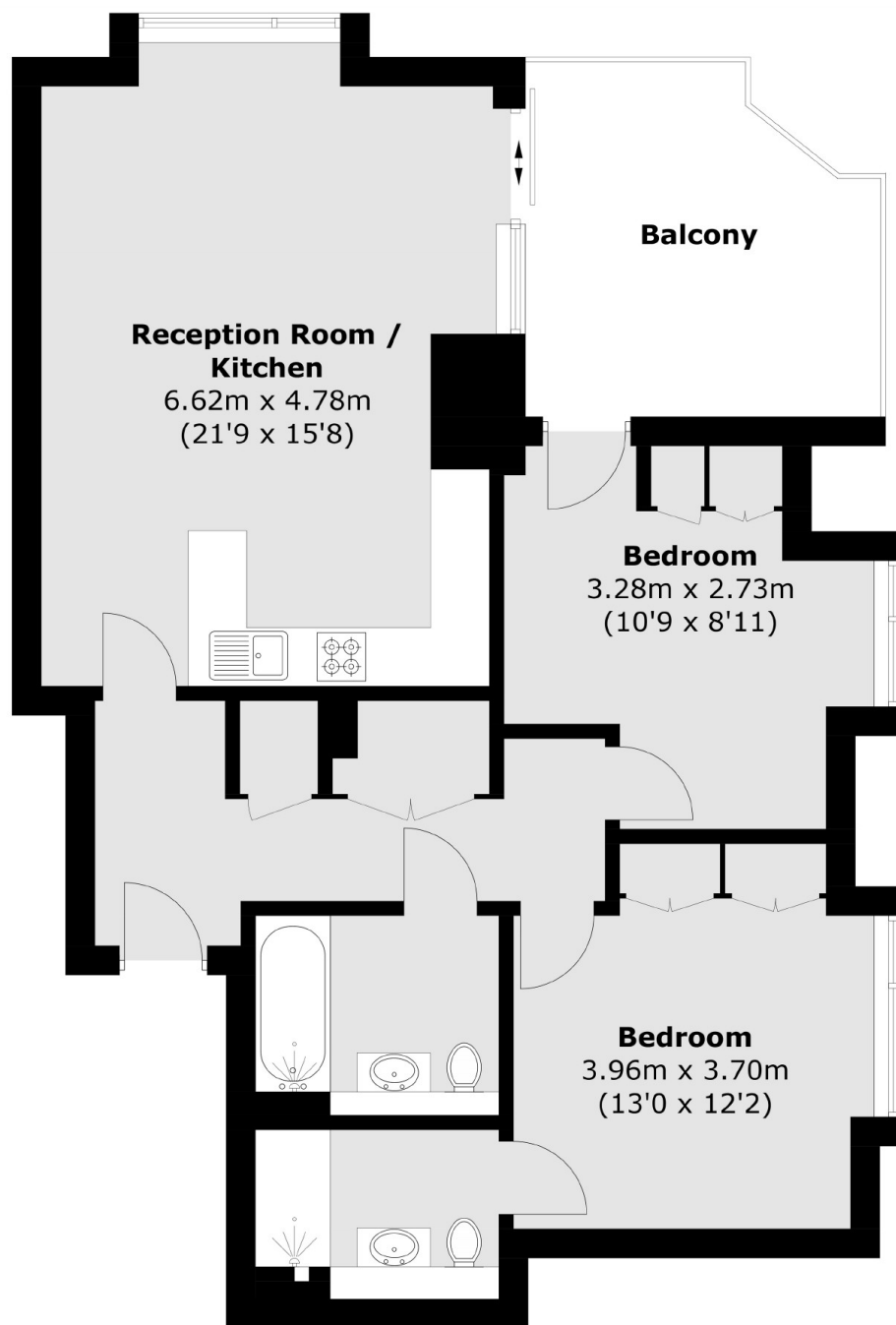
A brand new two double bedroom apartment finished to a very high specification, located in the prestigious Chelsea Creek development.

Chelsea Creek is ideally located for the local amenities of Imperial Wharf while there is a wide range of shops, bars and boutiques available on King's Road.

### Features

- Two Double Bedrooms
- Gym And Pool Access
- Brand New
- Private Balcony
- 24 Hour Concierge
- Imperial Wharf Station

# Bridgewater Avenue, London, SW6



## Fourteenth Floor

Total area (approx.): 79.0 sq. m (850.3 sq. ft)  
Balcony area : 12.0 sq. m (129.1 sq. ft)