



## The Boulevard, SW6

£725 Per week

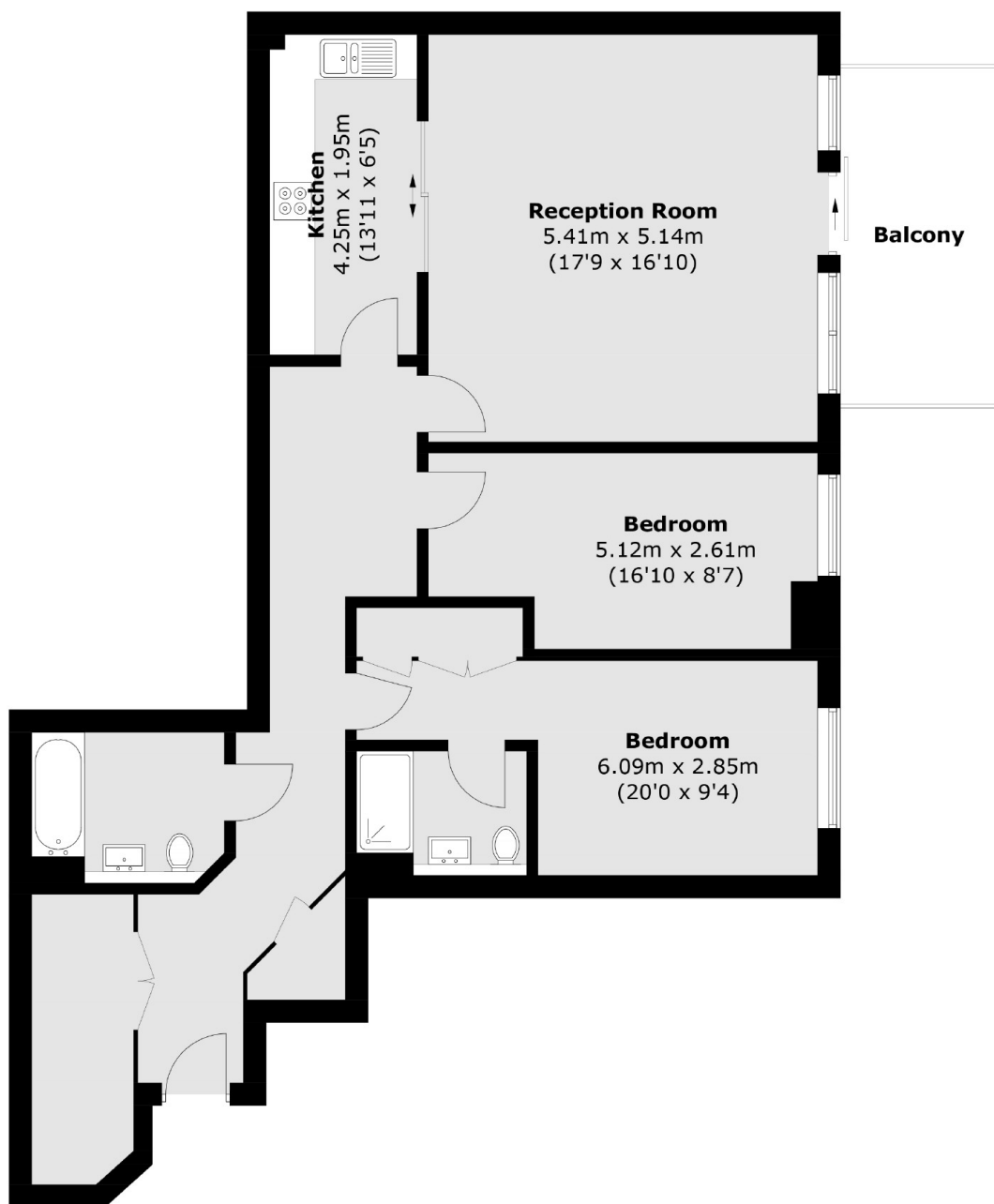
An impressive two double bedroom apartment in this prestigious 24-hour portered riverside development with its own private balcony.

Imperial Wharf offers a number of excellent restaurants, bars and has the river bus service provides access to Blackfriars and Putney Piers.

### Features

- Two Double Bedrooms
- Two Bathrooms
- Large Private Balcony
- Gym
- Unfurnished
- 24 Hr Concierge

# The Boulevard, London, SW6



Total area (approx.): 98.8 sq. m (1,063.5 sq. ft)  
Balcony: 9.3 sq. m (100.1 sq. ft)