



Lensbury Avenue, SW6

£692 Per week

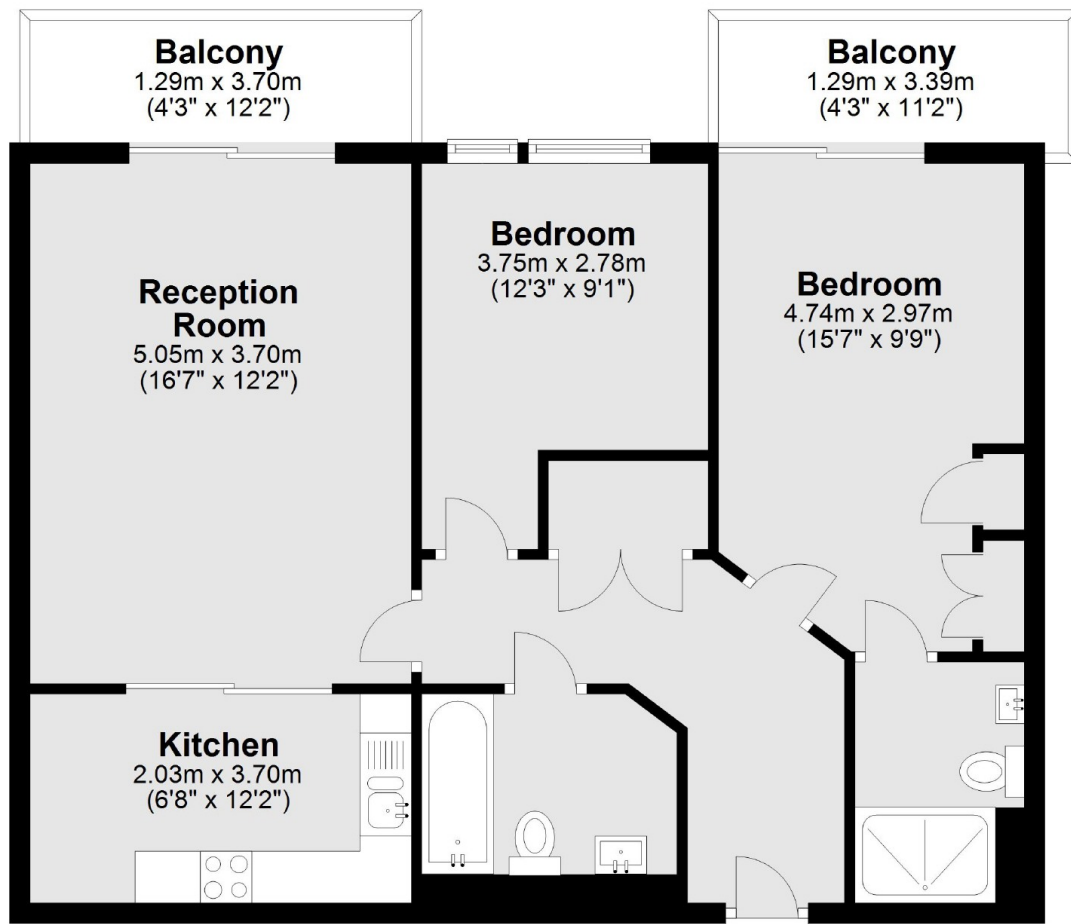
A lovely and well presented two bedroom apartment with a private balcony located in the popular Imperial Wharf development.

Imperial Wharf overland Station is less than 200m with links to Clapham Junction and there is a Thames Clipper service from Chelsea Harbour.

Features

- Two Double Bedrooms
- Parking Included
- Private Balcony
- 24 h/r Concierge
- Riverside development
- Imperial Wharf station

Lensbury Avenue, London, SW6



Total area: approx. 69.2 sq. metres (745.0 sq. feet)