



## The Boulevard, SW6

£692 Per week

An beautiful two double bedroom, two bathroom apartment located within the prestigious Imperial Wharf development. The reception has spectacular floor to ceiling dual aspect windows looking over the River Thames.

Imperial Wharf offers a number of excellent restaurants and bars and the river bus service provides access to Blackfriars and Putney Piers.

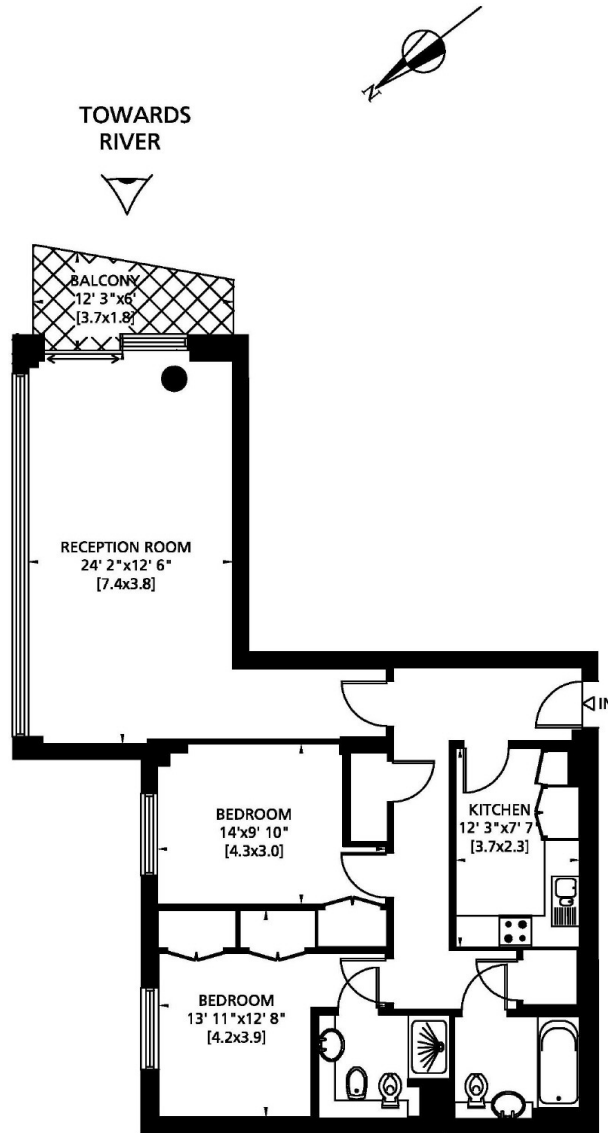
### Features

Riverside Apartment  
Two Bedrooms  
Two Bathrooms  
Spacious Reception  
Large Balcony  
Concierge and Gym

# The Boulevard, London, SW6

Gross Internal Area: 92 Sq. metres  
990 Sq. feet

TOWARDS  
RIVER



THIRD FLOOR