



Clove Hitch Quay, SW11

£646 Per week

A fabulous two bedroom two bathroom first floor apartment with direct river views located in this popular riverside development.

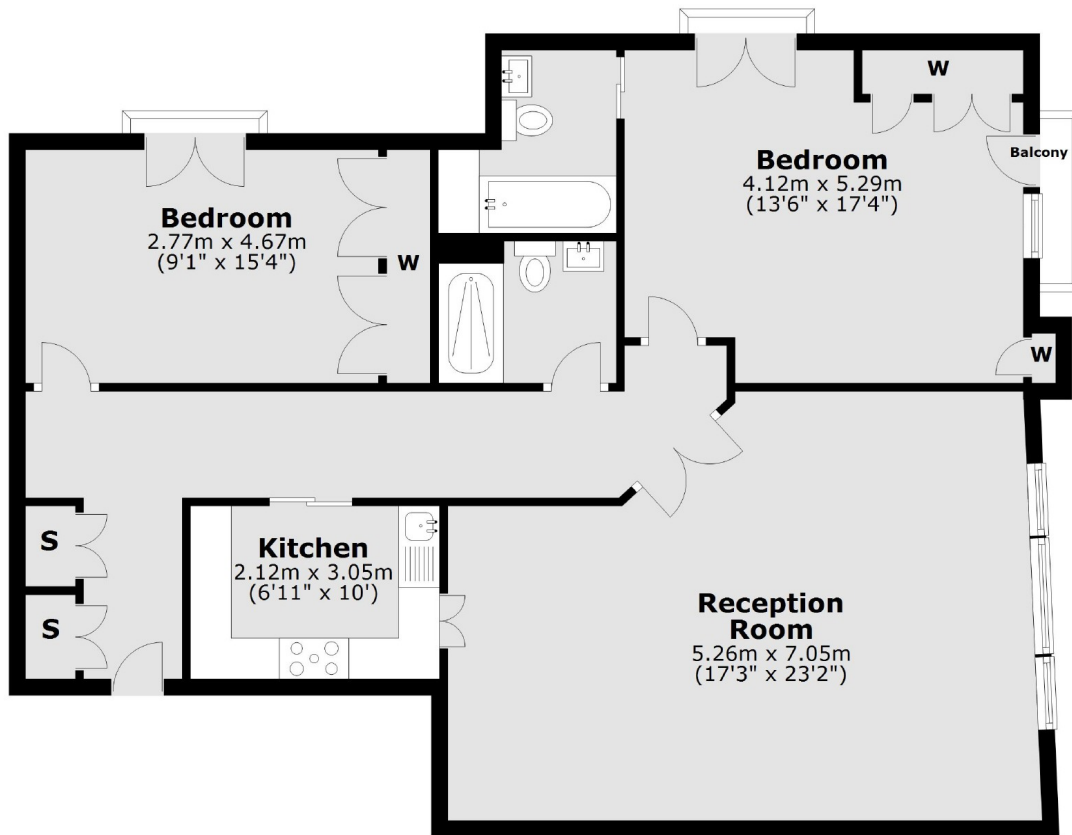
Within a mile from Wandsworth Town station and Clapham Junction, you have easy access to the Uber Boat services for a unique way of commuting and travelling around London.

Features

- Two Double Bedrooms
- Two Bathrooms
- Underground Parking
- Balcony
- River Views
- Wood Floors

Clove Hitch Quay, London, SW11

First Floor



Main area: Approx. 98.9 sq. metres (1064.8 sq. feet)
Plus balconies, approx. 1.0 sq. metres (10.9 sq. feet)