



## The Boulevard, SW6

£675 Per week

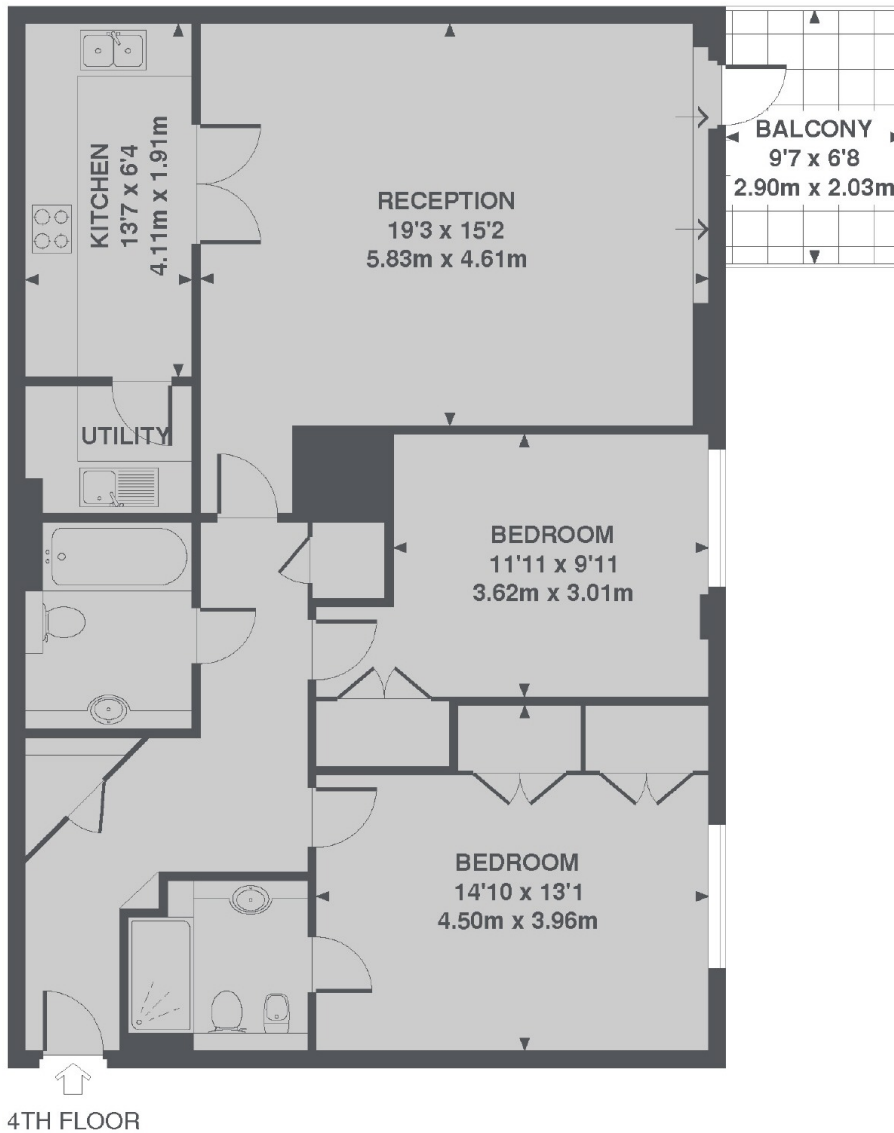
A unfurnished two double bedroom apartment located within the prestigious Imperial Wharf development.

Imperial Wharf offers a number of excellent restaurants and bars and the river bus service provides access to Blackfriars and Putney Piers.

### Features

Riverside Apartment  
Two Bedrooms  
Two Bathrooms  
Unfurnished  
Large Balcony  
Concierge and Gym

# The Boulevard, London, SW6



4TH FLOOR

TOTAL APPROX. FLOOR AREA 991 SQ. FT. (92.1 SQ. M.)