



Carlyle Court, SW10

£1,900 Per week

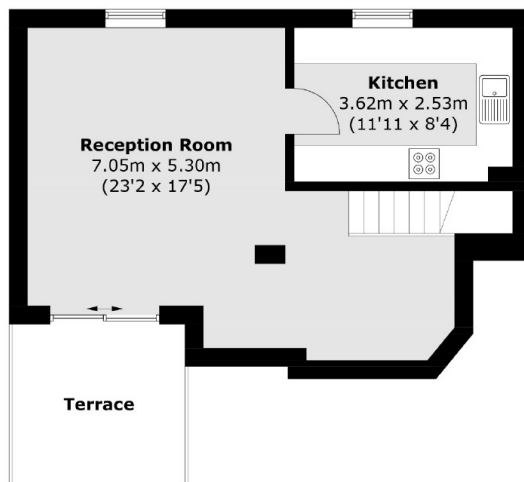
SHORT LET: A two double bedroom penthouse apartment in Chelsea Harbour. This very bright property has a two bathrooms, roof terrace, a porter and one underground parking space. Bills included

Carlyle Court is conveniently situated for Imperial Wharf overground station which has links to the underground at West Brompton (District Line). Supermarket megastore is within easy reach.

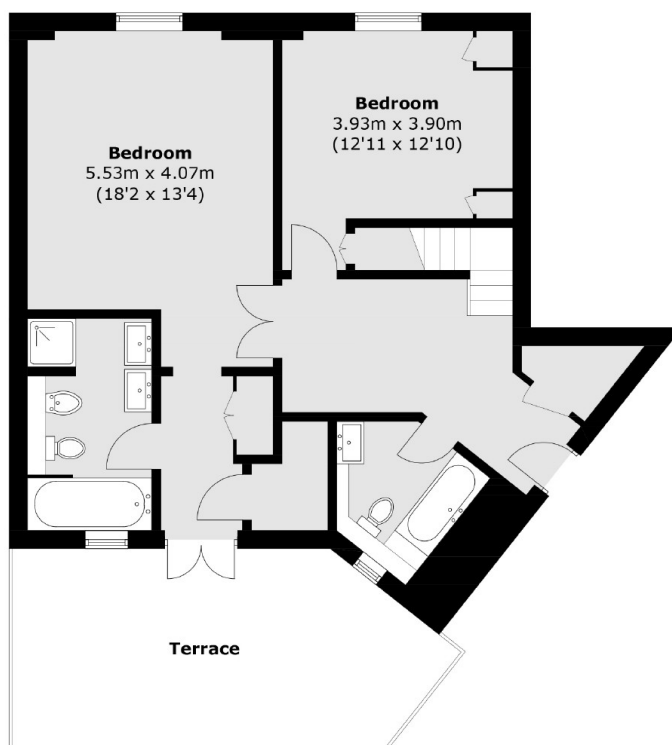
Features

- Penthouse Apartment
- Two Double Bedrooms
- Bills Included
- Roof Terrace
- One Parking Space
- Porter

Carlyle Court, London, SW10



Fourth Floor



Third Floor

Total area (approx.): 108.7 sq. m (1,170.0 sq. ft)
Terrace: 29.1 sq. m (313.2 sq. ft)