



Waterfront Drive, SW10

£8,000 Per week

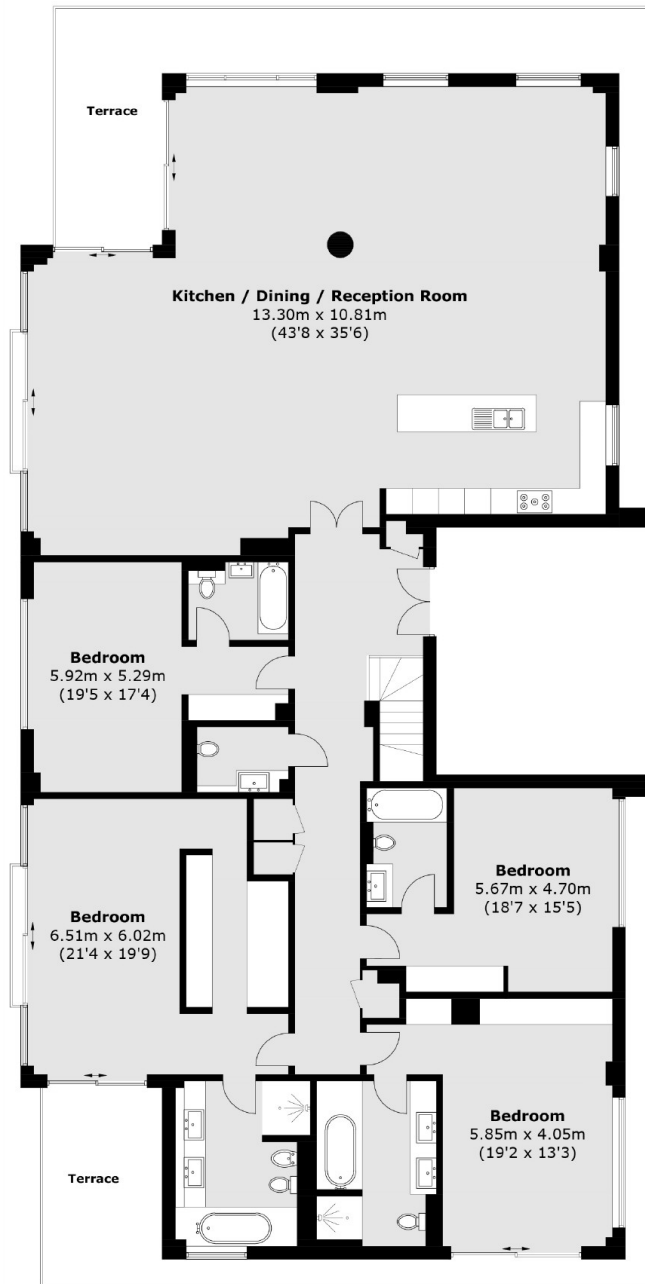
SHORT LET: A stunning four bedroom, four bathroom penthouse measuring over 3,900 sq ft arranged over three floors with direct river views situated in Imperial Wharf.

Imperial Wharf offers a number of excellent restaurants and bars and the river bus service provides direct access to Blackfriars and Putney Piers.

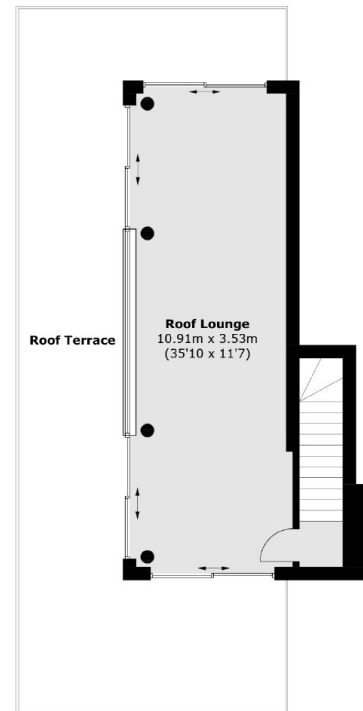
Features

- Four Doubles Bedrooms
- Bills Included
- Penthouse
- Direct River Views
- 24 Hr Security & Concierge
- Furnished

Waterfront Drive, London, SW10



Sixth Floor



Seventh Floor

Total area (approx.): 350.6 sq. m (3773.8 sq. ft)
Terrace (approx.): 119.4 sq. m (1285.2 sq. ft)