



Ogley Road, Brownhills
Walsall, WS8 6AN

Offers in Excess of £200,000

Brownhills

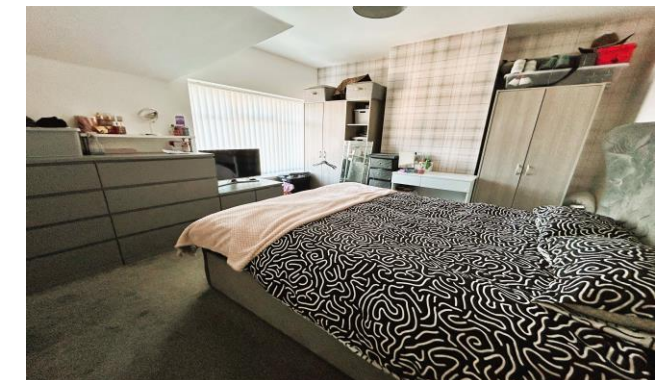
Offers in Excess of £200,000



Set within easy reach of the amenities of Brownhills, this fabulous semi-detached house boasts beautifully presented accommodation comprising, in brief, light and airy lounge, excellent re-fitted kitchen, useful utility room / guest WC, two bedrooms and re-fitted bathroom.

Externally, there is a neatly maintained rear garden with decked area and lawn.

There is a driveway to the front of the property providing off road parking for several cars.





Property Specification

EXTENDED TWO BEDROOM SEMI DETACHED
LOUNGE
FITTED KITCHEN
DOWNSTAIRS W.C.
LAUNDRY ROOM

Entrance Hall

Lounge 11' 1" x 12' 3" (3.38m x 3.74m)

Kitchen 9' 3" x 8' 10" (2.83m x 2.68m)

Guest WC

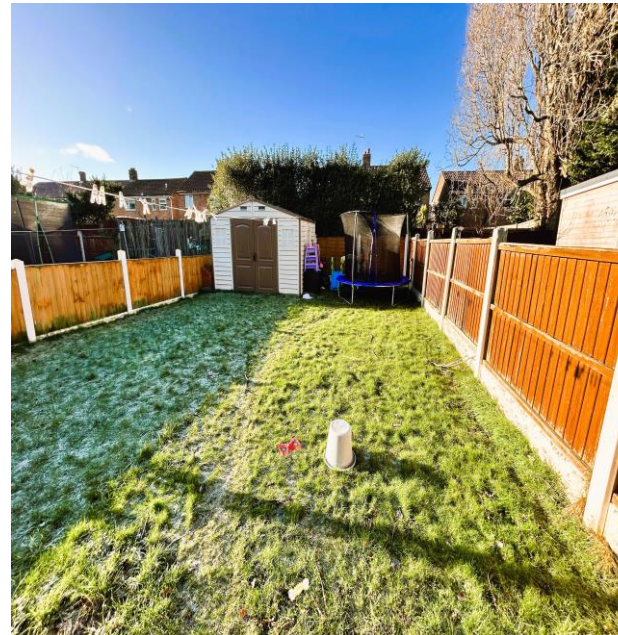
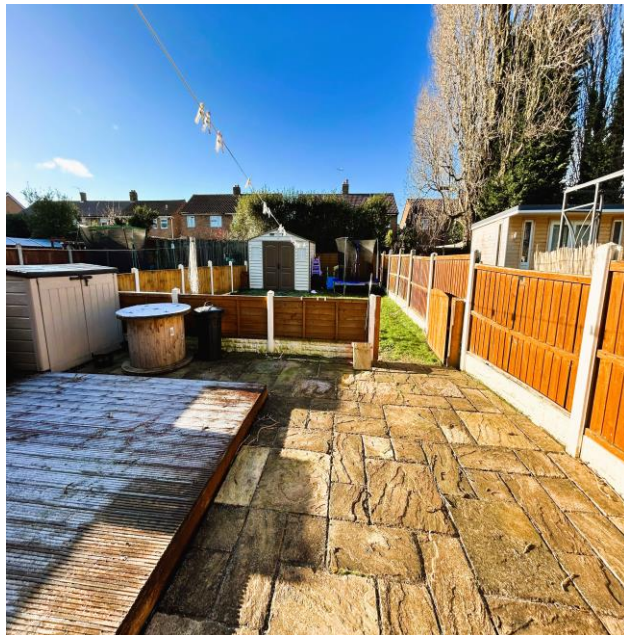
Utility room 10' 1" x 5' 8" (3.05m x 1.73m)

First Floor Landing

Bedroom One 12' 3" x 11' 2" (3.73m x 3.4m)

Bedroom Two 9' 6" x 9' 6" (2.89m x 2.9m)

Bathroom



Agent's Note:

Every care has been taken with the preparation of these Sales Particulars but they are for general guidance only and complete accuracy cannot be guaranteed. If there is any point which is of particular importance, professional verification should be sought. The mention of any fixtures, fittings and/or appliances does not imply they are in full efficient working order as they have not been tested. All dimensions are approximate. Photographs are reproduced for general information and it cannot be inferred that any item shown is included in the sale. These Sales Particulars do not constitute a contract or part of a contract.
Came on the market: 10th January 2025

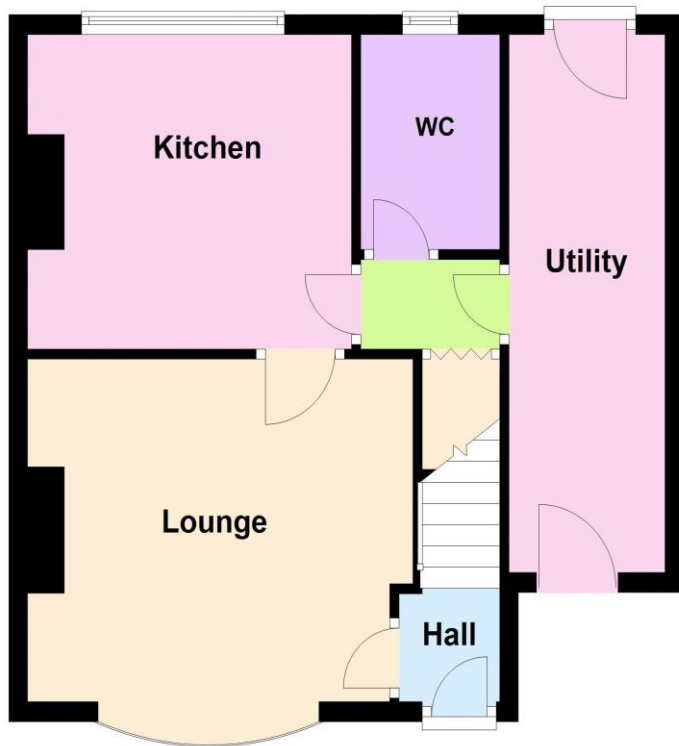
Viewer's Note:

Services connected: Mains gas, electricity, water & drainage
Council tax band: A
Tenure: Freehold

Floor Plan

This floor plan is not drawn to scale and is for illustration purposes only

Ground Floor



First Floor



Energy Efficiency Rating

Score	Energy rating	Current	Potential
92+	A		
81-91	B		86 B
69-80	C	69 C	
55-68	D		
39-54	E		
21-38	F		
1-20	G		

Map Location

