

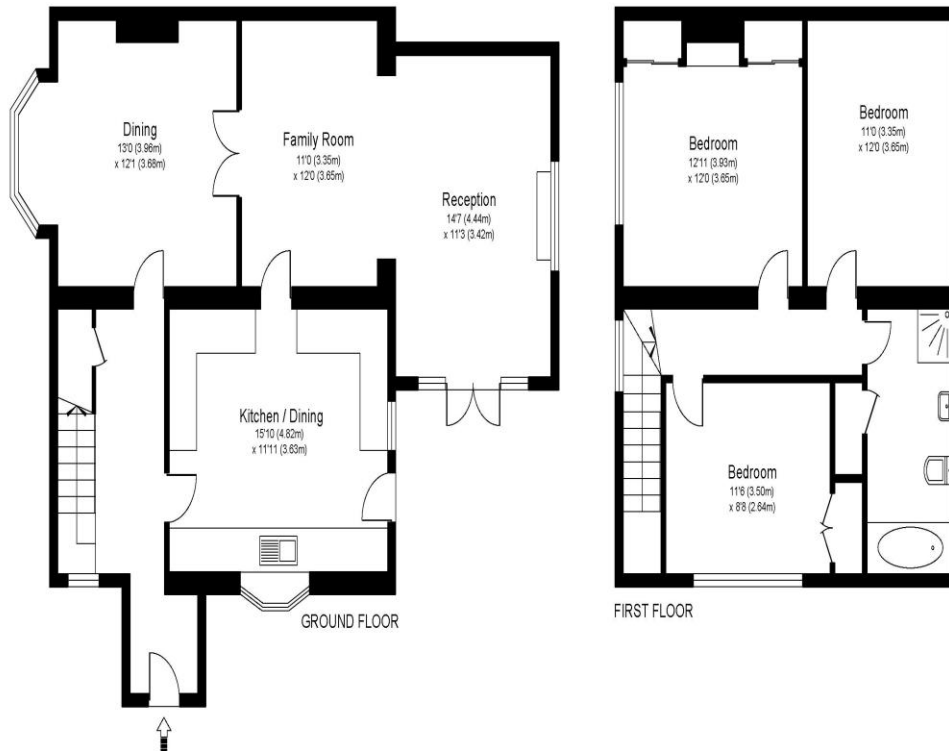


Mayo Road, Walton-On-Thames, KT12 2QA

£739,500



MAYO ROAD KT12



Approximate Gross Internal Floor Area: 125 m sq / 1341 sq ft

Whilst every attempt has been made to ensure the accuracy of the floor plan contained here, measurements of doors, windows and rooms are approximate and no responsibility is taken for any error, omission or misstatements. These plans are not to scale and are for representation purposes only as defined by RICS Code of Measuring Practice and should be used as such by any prospective purchaser. Specifically no guarantee is given on total square footage of the property if quoted on this plan. Any figure given is for initial guidance only and should not be relied on as a basis of valuation.

For sale with no onward chain, a three-bedroom semi-detached home with plenty of potential to extend and improve subject to the normal permissions. There is also a large side garden with two garages and off-street parking. Set in a fantastic area of town within a quiet street close to both the River Thames and High Street amenities. Internally this home offers plenty of space with a large kitchen and two reception rooms on the ground floor. There are three bedrooms upstairs, a family bathroom upstairs and a downstairs cloakroom. The home would benefit from updating but is currently lived in and habitable. Externally there is a manageable garden with plenty of space to the side to offer potential to extend or potentially develop all subject to the normal planning permissions. Currently there are two single garages next to each other and off-street parking. Located within the popular region of Walton-on-Thames within a quiet street. A great location for both the River Thames with access to the tow path and selection of pubs and the high street and town centre. There is also a good selection of local schools in the area. Walton-on-Thames is a great hub for commuters with excellent rail links to London Waterloo and road links to the M3, M25 and A3. EPC Rating D.



AGENTS NOTES: These details do not constitute any part of an offer or contract. In issuing them we do not have any authority to give any warranty or representation whatsoever in respect of this property. These details are provided without any responsibility on our part or the part of the vendors. No statements in these details are to be relied upon as representations of fact and purchasers should satisfy themselves by inspection or otherwise as to the accuracy of the statements contained therein.

Equipment: We have not tested the equipment or central heating system mentioned in these particulars and purchasers are advised to satisfy themselves as to their working order and condition.

Measurements: Great care is taken when measuring but measurements should not be relied upon for ordering carpets, equipment, etc.