

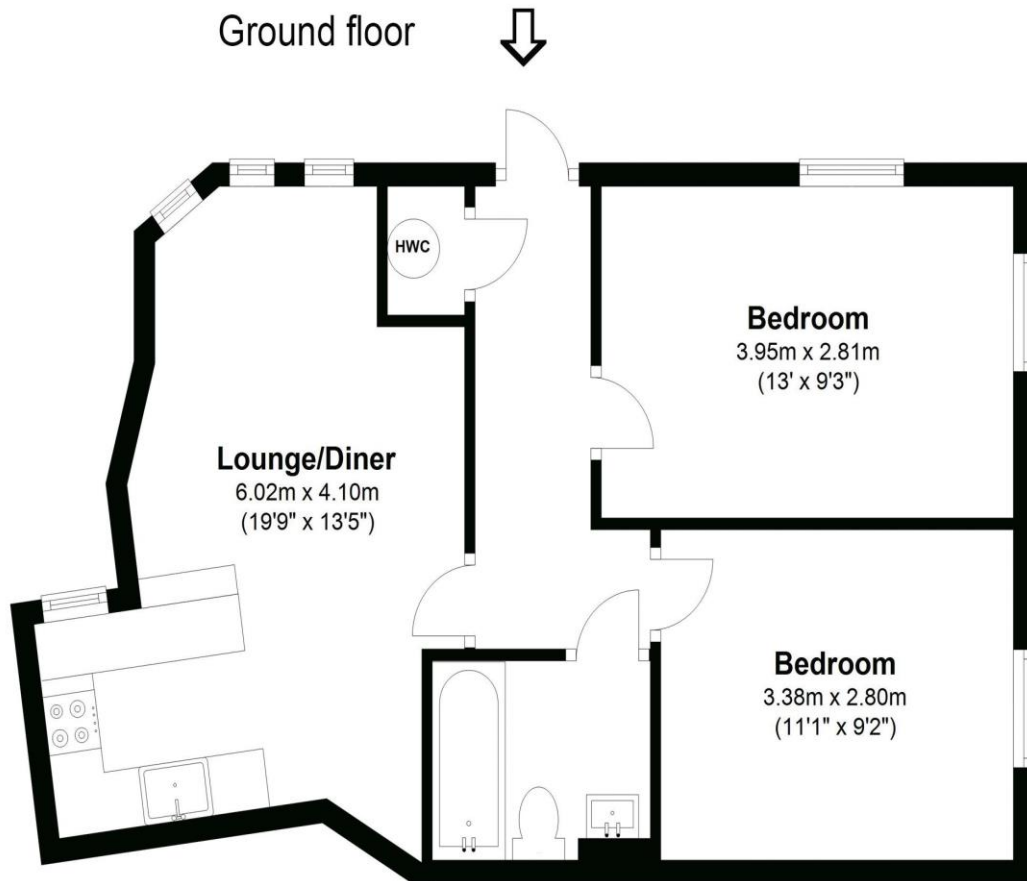


11 Cloister Court, Church Street, Walton-On-Thames, Surrey, KT12 2QS

£1500pcm + Initial deposit



Approximate gross internal floor area 56 Sq M 606 Sq Ft



Whilst every attempt has been made to ensure the accuracy of the floor plan contained here, measurements are approximate and no responsibility is taken for any error, omission, or mis-statement. The plan is for illustrative purposes only and should be used as such by any prospective purchaser.

A ground floor, two-bedroom modern apartment offered to rent with its own private garden. Finished to a high specification throughout, the property benefits from underfloor heating and features an open-plan living room and kitchen with breakfast bar, two bedrooms and a fitted bathroom. Externally, there is a good-sized garden and an allocated parking space. Centrally located in Walton, just moments from The Heart shopping centre and restaurants, and within walking distance of the River Thames. Available unfurnished now. EPC Rating TBC.



AGENTS NOTES: These details do not constitute any part of an offer or contract. In issuing them we do not have any authority to give any warranty or representation whatsoever in respect of this property. These details are provided without any responsibility on our part or the part of the vendors. No statements in these details are to be relied upon as representations of fact and purchasers should satisfy themselves by inspection or otherwise as to the accuracy of the statements contained therein.

Equipment: We have not tested the equipment or central heating system mentioned in these particulars and purchasers are advised to satisfy themselves as to their working order and condition.

Measurements: Great care is taken when measuring but measurements should not be relied upon for ordering carpets, equipment, etc.