



Grovely Field Common Lane Walton-On-Thames Surrey KT12 3QH

£2750pcm + Initial deposit



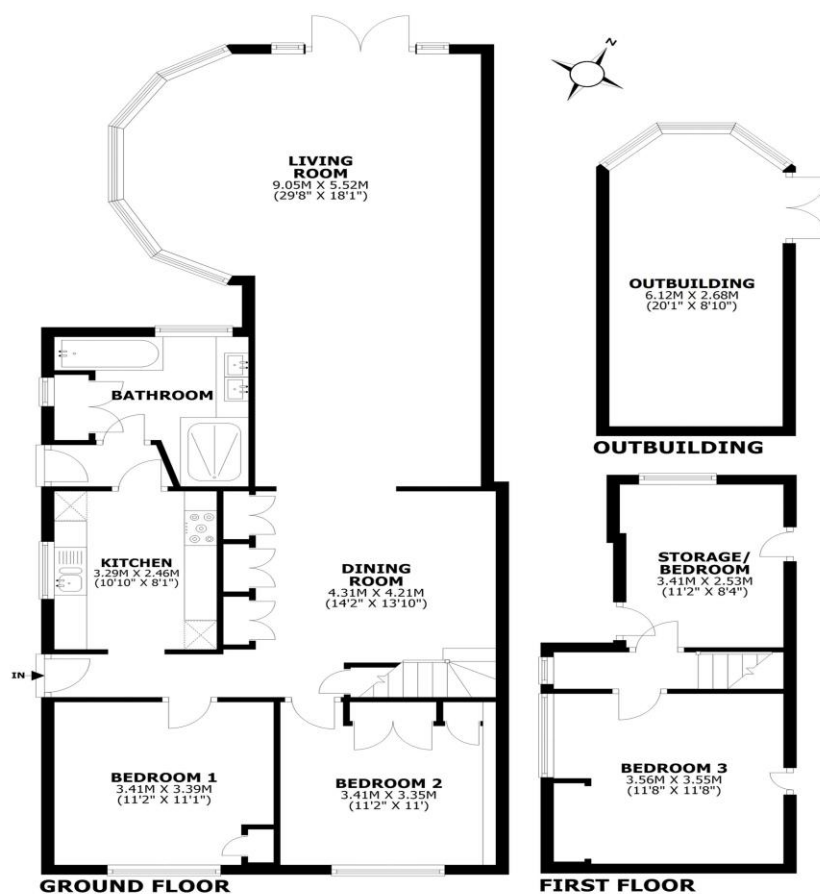


Fieldcommon Lane, Walton-on-Thames, KT12

Total internal area: approx. 142.8 sq. metres (1536.3 sq. feet)

Main area: approx. 127.0 sq. metres (1366.6 sq. feet)

Outbuilding(s): approx. 15.8 sq. metres (169.7 sq. feet)



This floorplan is for illustrative guidance only and is not to be drawn to scale. Whilst every attempt has been made to ensure accuracy, measurements are approximate and should not be relied upon as a matter of fact. Maximum dimensions are given excluding small alcoves, etc unless otherwise stated.

A spacious detached residence on Field Common Lane, providing a unique blend of tranquil living and practical convenience. The ground floor of the property comprises a large, open-plan living space with ample room to comfortably define separate lounge and dining areas. This floor features a downstairs bathroom and two well-proportioned bedrooms alongside your kitchen and plenty of storage space. The accommodation continues on the first floor, which offers two additional rooms that can be easily utilised as bedrooms if required, complete with useful eves storage. This flexible layout makes the property ideal for families, professionals, or those needing dedicated guest space or an extra study. Adding further appeal is the detached studio to the rear, offering an invaluable separate space away from the main house. Outside, the property benefits from off-street parking to the front and a large, mainly paved rear garden, providing a fantastic outdoor space that is easy to maintain. Field Common Lane offers a sought-after rural feel, while still being conveniently located for travel and essential amenities. Hersham train station (offering regular services) and a Tesco Express are within easy reach, combining the best of peaceful village life with modern convenience. Available NOW, unfurnished. EPC Rating D.



AGENTS NOTES: These details do not constitute any part of an offer or contract. In issuing them we do not have any authority to give any warranty or representation whatsoever in respect of this property. These details are provided without any responsibility on our part or the part of the vendors. No statements in these details are to be relied upon as representations of fact and purchasers should satisfy themselves by inspection or otherwise as to the accuracy of the statements contained therein.

Equipment: We have not tested the equipment or central heating system mentioned in these particulars and purchasers are advised to satisfy themselves as to their working order and condition.

Measurements: Great care is taken when measuring but measurements should not be relied upon for ordering carpets, equipment, etc.