

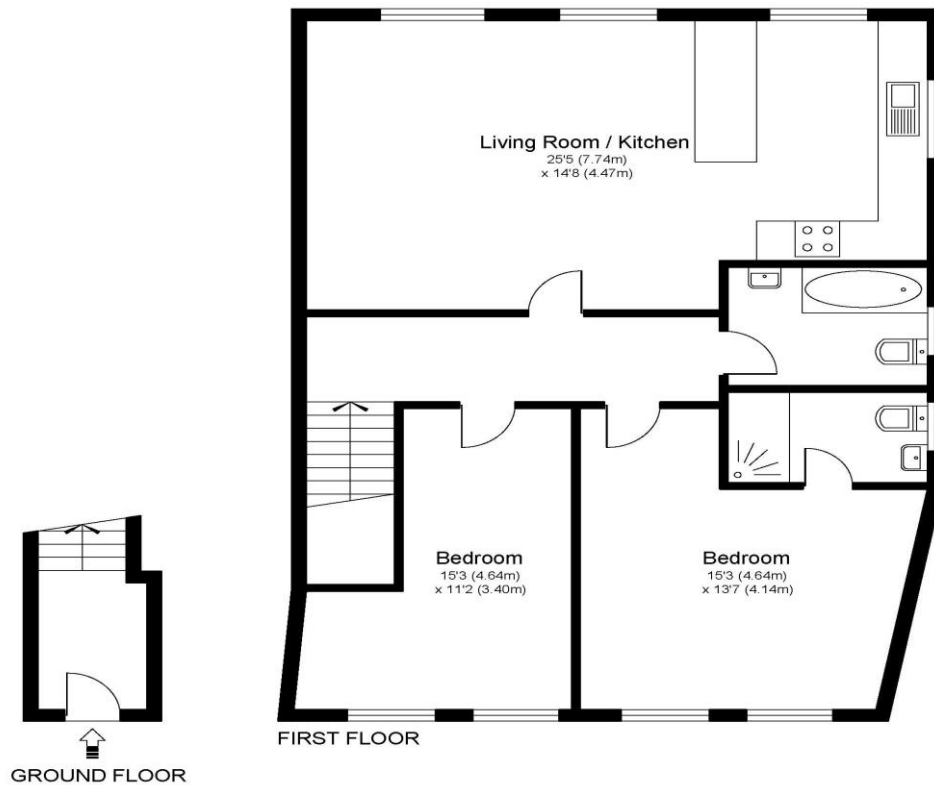


**6a Bridge Street, Walton-On-Thames, Surrey, KT12 1AA**

**£1650pcm + Initial deposit**



BRIDGE STREET, WALTON ON THAMES, SURREY, KT12



Approximate Gross Internal Floor Area: 84 m sq / 900 sq ft

Whilst every attempt has been made to ensure the accuracy of the floor plan contained here, measurements of doors, windows and rooms are approximate and no responsibility is taken for any error, omission or misstatements. These plans are not to scale and are for representation purposes only as defined by RICS Code of Measuring Practice and should be used as such by any prospective purchaser. Specifically no guarantee is given on total square footage of the property if quoted on this plan. Any figure given is for initial guidance only and should not be relied on as a basis of valuation.

A spacious two-bedroom, two-bathroom flat, ideally located in the heart of Walton town centre. The living room and kitchen are open-plan, with a breakfast bar separating the space and large windows allowing in plenty of natural light. Both bedrooms are good-sized doubles, with the main bedroom benefiting from an en-suite shower room. There's also a separate family bathroom. The flat is set in a popular location, within easy reach of all the amenities the town has to offer. You're just a short walk from the River Thames, and Walton Bridge is close by, offering good road links. The landlord is flexible regarding furniture, and the property is available now. EPC Rating C.



**AGENTS NOTES:** These details do not constitute any part of an offer or contract. In issuing them we do not have any authority to give any warranty or representation whatsoever in respect of this property. These details are provided without any responsibility on our part or the part of the vendors. No statements in these details are to be relied upon as representations of fact and purchasers should satisfy themselves by inspection or otherwise as to the accuracy of the statements contained therein.

**Equipment:** We have not tested the equipment or central heating system mentioned in these particulars and purchasers are advised to satisfy themselves as to their working order and condition.

**Measurements:** Great care is taken when measuring but measurements should not be relied upon for ordering carpets, equipment, etc.