

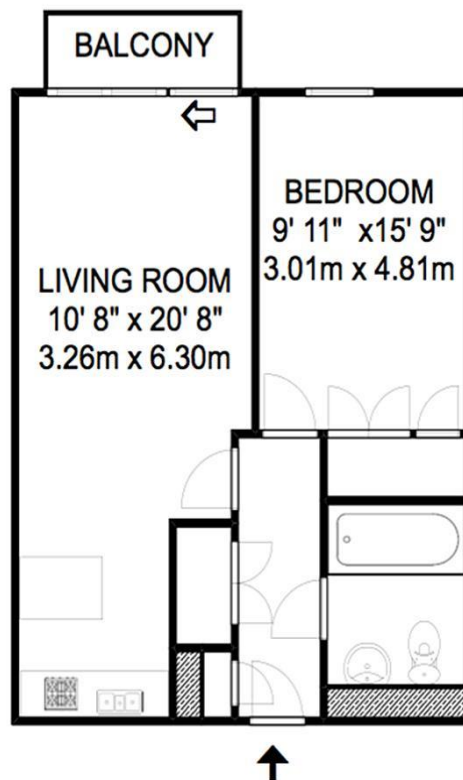


**101 The Heart Walton-On-Thames Surrey KT12 1GA**

**£1450pcm + Initial deposit**



APPROXIMATE GROSS INTERNAL FLOOR AREA 583 sq. ft. 54 m sq.



Whilst every attempt has been made to ensure the accuracy of the floor plan contained here, measurements are approximate and no responsibility is taken for any error, omission, or mis-statement. The plan is for illustrative purposes only and should be used as such by any prospective purchaser.

A one bedroom apartment in the Heart of Walton development set in the centre of town of Walton on Thames. The property has a lovely open plan kitchen living room that opens out onto the balcony. The kitchen has integrated appliances and a breakfast bar. The bedroom is a double and has fitted wardrobes. There is a stylish bathroom with white suite. The property also benefits from underground parking for one car, concierge service and 24-hour security on site. Located in Walton town centre, within walking distance to various shops, restaurants, and many other amenities. EPC Rating C. Available 5th September 2025.



**AGENTS NOTES:** These details do not constitute any part of an offer or contract. In issuing them we do not have any authority to give any warranty or representation whatsoever in respect of this property. These details are provided without any responsibility on our part or the part of the vendors. No statements in these details are to be relied upon as representations of fact and purchasers should satisfy themselves by inspection or otherwise as to the accuracy of the statements contained therein.

**Equipment:** We have not tested the equipment or central heating system mentioned in these particulars and purchasers are advised to satisfy themselves as to their working order and condition.

**Measurements:** Great care is taken when measuring but measurements should not be relied upon for ordering carpets, equipment, etc.