

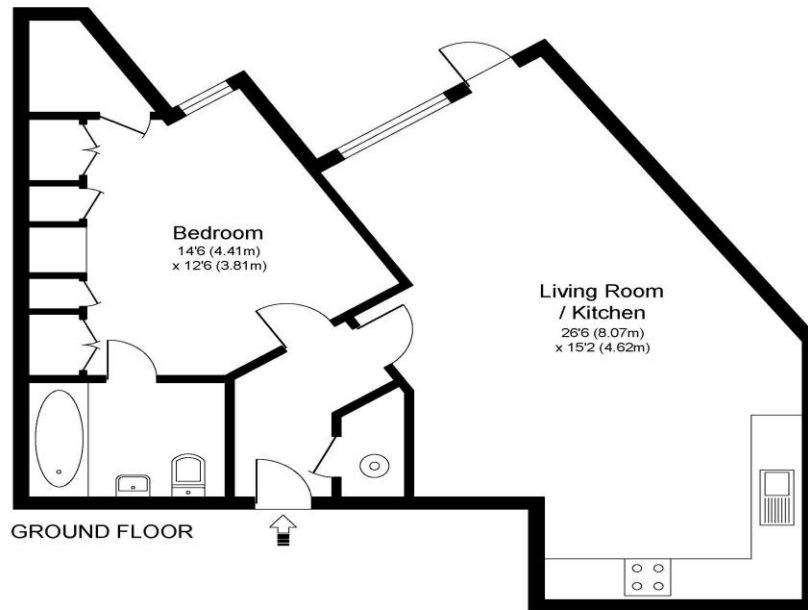


Flat 2 Cloister Court Church Street Walton-On-Thames Surrey KT12 2QS

£295,000



CLOISTER COURT, CHURCH STREET, WALTON ON THAMES, KT12



Approximate Gross Internal Floor Area: 54 m sq / 585 sq ft

Whilst every attempt has been made to ensure the accuracy of the floor plan contained here, measurements of doors, windows and rooms are approximate and no responsibility is taken for any error, omission or misstatements. These plans are not to scale and are for representation purposes only as defined by RICS Code of Measuring Practice and should be used as such by any prospective purchaser. Specifically no guarantee is given on total square footage of the property if quoted on this plan. Any figure given is for initial guidance only and should not be relied on as a basis of valuation.

A superbly presented one-bedroom ground floor apartment with a private courtyard garden that is conveniently situated in the heart of Walton on Thames. This modern and open-plan ground-floor apartment benefits from a 27'8 x 15'5 living/dining room and contemporary kitchen, a large double bedroom and a Jack and Jill bathroom. Outside there is a sunny aspect private courtyard garden and a secure allocated parking space. Cloister Court central location is ideally located for visiting the town center's array of shops, bars, cafes and restaurants and is only a short walk from the picturesque River Thames. Transport Links are provided by Walton on Thames mainline station into London Waterloo as well as having regular bus services. 109 years remain on the lease.



AGENTS NOTES: These details do not constitute any part of an offer or contract. In issuing them we do not have any authority to give any warranty or representation whatsoever in respect of this property. These details are provided without any responsibility on our part or the part of the vendors. No statements in these details are to be relied upon as representations of fact and purchasers should satisfy themselves by inspection or otherwise as to the accuracy of the statements contained therein.

Equipment: We have not tested the equipment or central heating system mentioned in these particulars and purchasers are advised to satisfy themselves as to their working order and condition.

Measurements: Great care is taken when measuring but measurements should not be relied upon for ordering carpets, equipment, etc.