

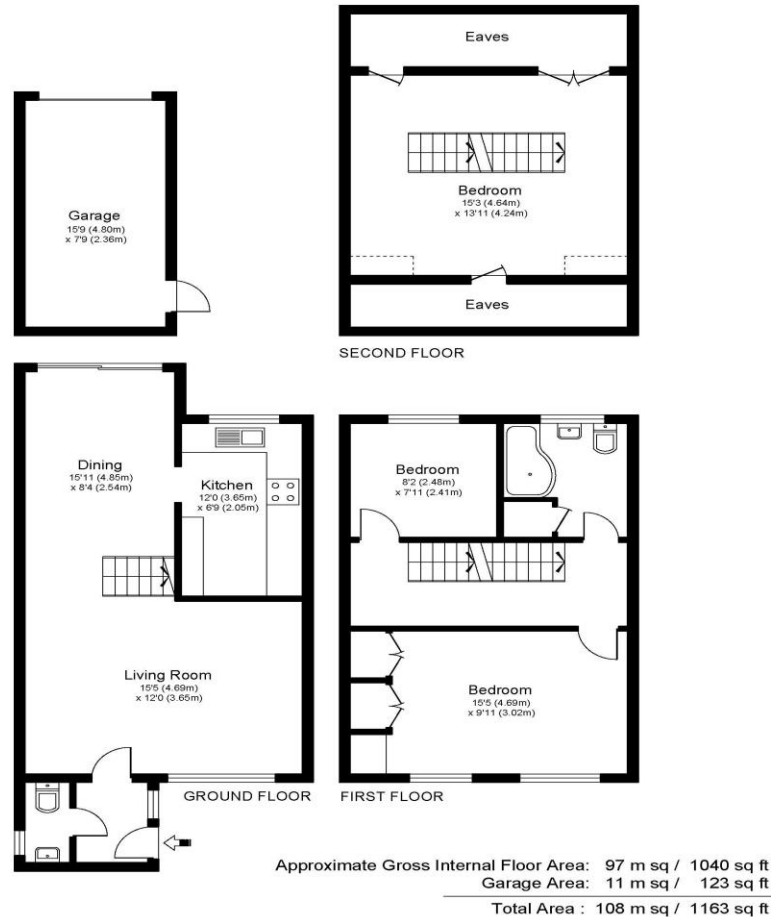


4 Hazlemere, Rydens Road, Walton-On-Thames, Surrey, KT12 3AQ

£2200pcm + Initial Deposit



HAZLEMERE, RYDENS ROAD, WALTON ON THAMES, SURREY, KT12



Whilst every attempt has been made to ensure the accuracy of the floor plan contained here, measurements of doors, windows and rooms are approximate and no responsibility is taken for any error, omission or misstatements. These plans are not to scale and are for representation purposes only as defined by RICS Code of Measuring Practice and should be used as such by any prospective purchaser. Specifically no guarantee is given on total square footage of the property if quoted on this plan. Any figure given is for initial guidance only and should not be relied on as a basis of valuation.

A spacious three-bedroom home set across three floors, with plenty of natural light and garage to the rear. Internally this is a lovely home with a light and airy feel across three floors of space. The bedrooms and bathroom are set across the first and second floor and are all a good comfortable size. The main bedroom has built in wardrobes and chest of drawers and the large double on the top floor benefits from eaves storage into the roof. The bathroom is modern and there is also a downstairs cloakroom for your convenience. On the ground floor once into the home you have a large open plan living space well zoned into your living and dining areas. The kitchen is offset and has been well designed within its space to give plenty of storage and boasts an integral Fridge Freezer and full width dishwasher. The home has double glazing and gas central heating, there are loads of big windows giving plenty of natural light. Externally we have a front garden area and to the rear a courtyard perfect for entertainment. There is a garage to the rear with access from the garden. The garage has power and an electric door. Behind your garage is your parking area within the well-maintained residents access lane. The location works well for both families and individuals; you have popular local schools close by, several parks, and you can access Hersham or Walton train stations with ease. Walton has a vibrant town centre with an array of shops and restaurants, and the River Thames has lovely tow-path walks. Access to the A3/M25/M3 is close, as is Heathrow airport. Available Now, Unfurnished. EPC Rating C.



AGENTS NOTES: These details do not constitute any part of an offer or contract. In issuing them we do not have any authority to give any warranty or representation whatsoever in respect of this property. These details are provided without any responsibility on our part or the part of the vendors. No statements in these details are to be relied upon as representations of fact and purchasers should satisfy themselves by inspection or otherwise as to the accuracy of the statements contained therein.

Equipment: We have not tested the equipment or central heating system mentioned in these particulars and purchasers are advised to satisfy themselves as to their working order and condition.

Measurements: Great care is taken when measuring but measurements should not be relied upon for ordering carpets, equipment, etc.