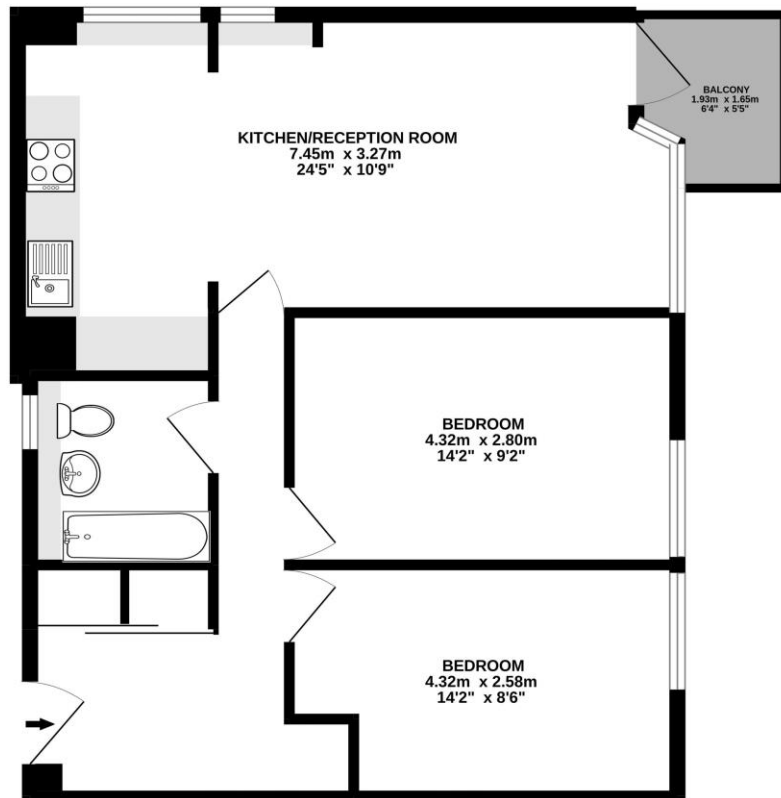




29 Lynde House Vicarage Fields Walton-On-Thames Surrey KT12 2ER

£1,450 pcm + Initial deposit





GROUND FLOOR
65.5 sq.m. (705 sq.ft.) approx.



TOTAL FLOOR AREA : 65.5 sq.m. (705 sq.ft.) approx.

Whilst every attempt has been made to ensure the accuracy of the floor plan above, measurements are approximate and no responsibility is taken for any error, omission or mis-statement. This plan is for illustrative purposes only and should be used as such by any prospective purchaser. Prepared by Steele Property Marketing Services
Made with Metropix ©2022

A two-bedroom, top floor flat, set in a practical location near schools, shops and the River Thames. This flat offers both a great amount of living and bedroom space with two large bedrooms and an open-plan kitchen/living room. The living room has direct access on to a private balcony with great views over the Queen Elizabeth Reservoir. The block has a secure entry system and lift access, You also have the benefit of a ground floor storage space.

Located in a residential area, with the Xcel Leisure Centre and River Thames in close proximity, and it is also walkable to the town centre and local schools. Unfurnished. EPC

Rating E. Available from 20th June 2025.



AGENTS NOTES: These details do not constitute any part of an offer or contract. In issuing them we do not have any authority to give any warranty or representation whatsoever in respect of this property. These details are provided without any responsibility on our part or the part of the vendors. No statements in these details are to be relied upon as representations of fact and purchasers should satisfy themselves by inspection or otherwise as to the accuracy of the statements contained therein.

Equipment: We have not tested the equipment or central heating system mentioned in these particulars and purchasers are advised to satisfy themselves as to their working order and condition.

Measurements: Great care is taken when measuring but measurements should not be relied upon for ordering carpets, equipment, etc.