

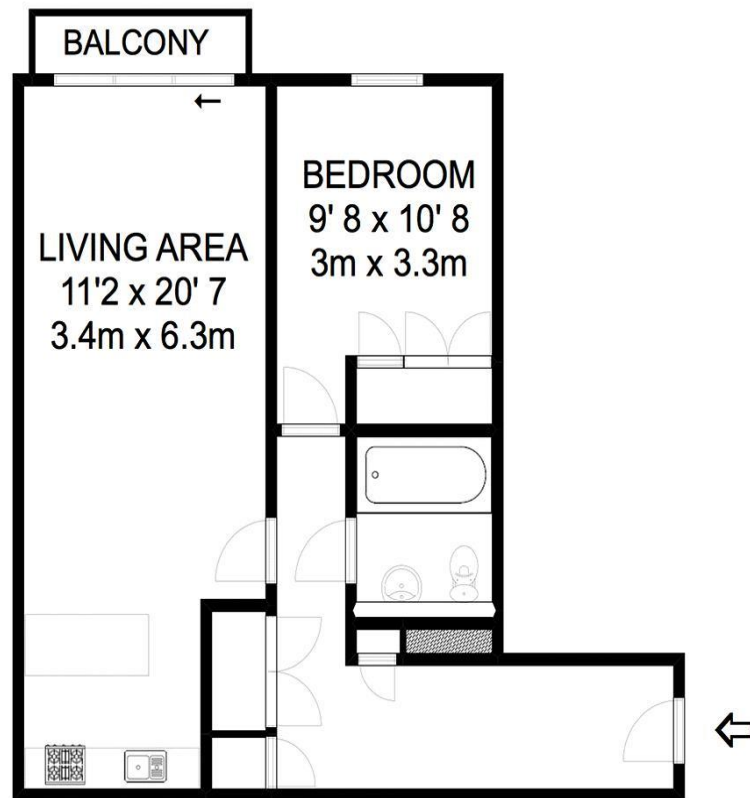


249 The Heart Walton-On-Thames Surrey KT12 1GB

£1450 pcm + Initial deposit



APPROXIMATE GROSS INTERNAL FLOOR AREA 603 sq. ft. 56 m sq.



Whilst every attempt has been made to ensure the accuracy of the floor plan contained here, measurements are approximate and no responsibility is taken for any error, omission, or mis-statement. The plan is for illustrative purposes only and should be used as such by any prospective purchaser.

We are pleased to offer this one-bedroom town centre apartment in the popular Heart development. Superior specifications include Poggenpohl kitchens and bathrooms by Villeroy and Boch. The property has open plan kitchen living area that leads onto the balcony and double bedroom with fitted wardrobes. The development benefits from a private central landscaped garden, concierge service and secure underground parking. London Waterloo station is less than half an hour away by rail and the A3, M3 and M25 are all within easy reach. Unfurnished. EPC Rating B. Available from 5th July 2025.



AGENTS NOTES: These details do not constitute any part of an offer or contract. In issuing them we do not have any authority to give any warranty or representation whatsoever in respect of this property. These details are provided without any responsibility on our part or the part of the vendors. No statements in these details are to be relied upon as representations of fact and purchasers should satisfy themselves by inspection or otherwise as to the accuracy of the statements contained therein.

Equipment: We have not tested the equipment or central heating system mentioned in these particulars and purchasers are advised to satisfy themselves as to their working order and condition.

Measurements: Great care is taken when measuring but measurements should not be relied upon for ordering carpets, equipment, etc.