



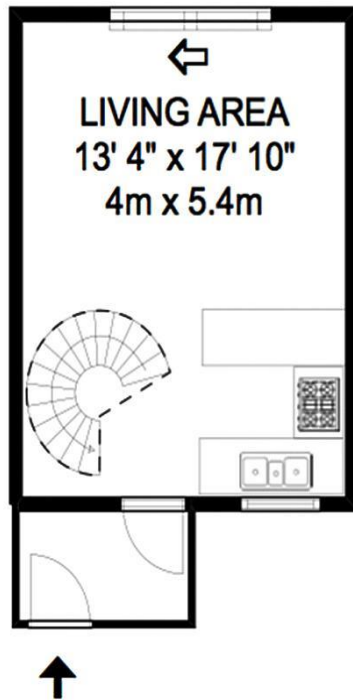
5 Somerset Close Walton-On-Thames Surrey KT12 5JS

£1395 pcm + Initial Deposit

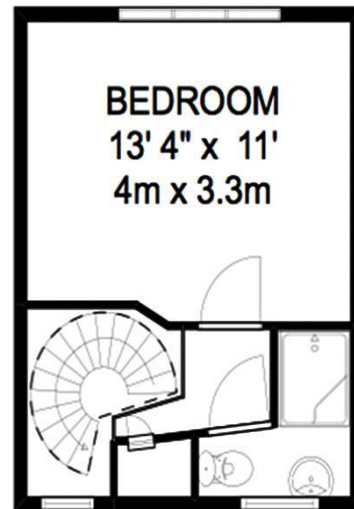


APPROXIMATE GROSS INTERNAL FLOOR AREA 504 sq. ft. 47 m sq.

GROUND FLOOR



FIRST FLOOR



Whilst every attempt has been made to ensure the accuracy of the floor plan contained here, measurements are approximate and no responsibility is taken for any error, omission, or mis-statement. The plan is for illustrative purposes only and should be used as such by any prospective purchaser.

James Neave are delighted to offer this one bedroom home with a private rear garden. Superbly- presented with a modern kitchen and shower room. The open-plan living area has a feature spiral staircase up to the first floor. There is also a well-sized rear garden. A great location within Hersham Village within close proximity to Walton Mainline Station. Unfurnished. EPC Rating E. Available 7th July 2025.



AGENTS NOTES: These details do not constitute any part of an offer or contract. In issuing them we do not have any authority to give any warranty or representation whatsoever in respect of this property. These details are provided without any responsibility on our part or the part of the vendors. No statements in these details are to be relied upon as representations of fact and purchasers should satisfy themselves by inspection or otherwise as to the accuracy of the statements contained therein.

Equipment: We have not tested the equipment or central heating system mentioned in these particulars and purchasers are advised to satisfy themselves as to their working order and condition.

Measurements: Great care is taken when measuring but measurements should not be relied upon for ordering carpets, equipment, etc.