

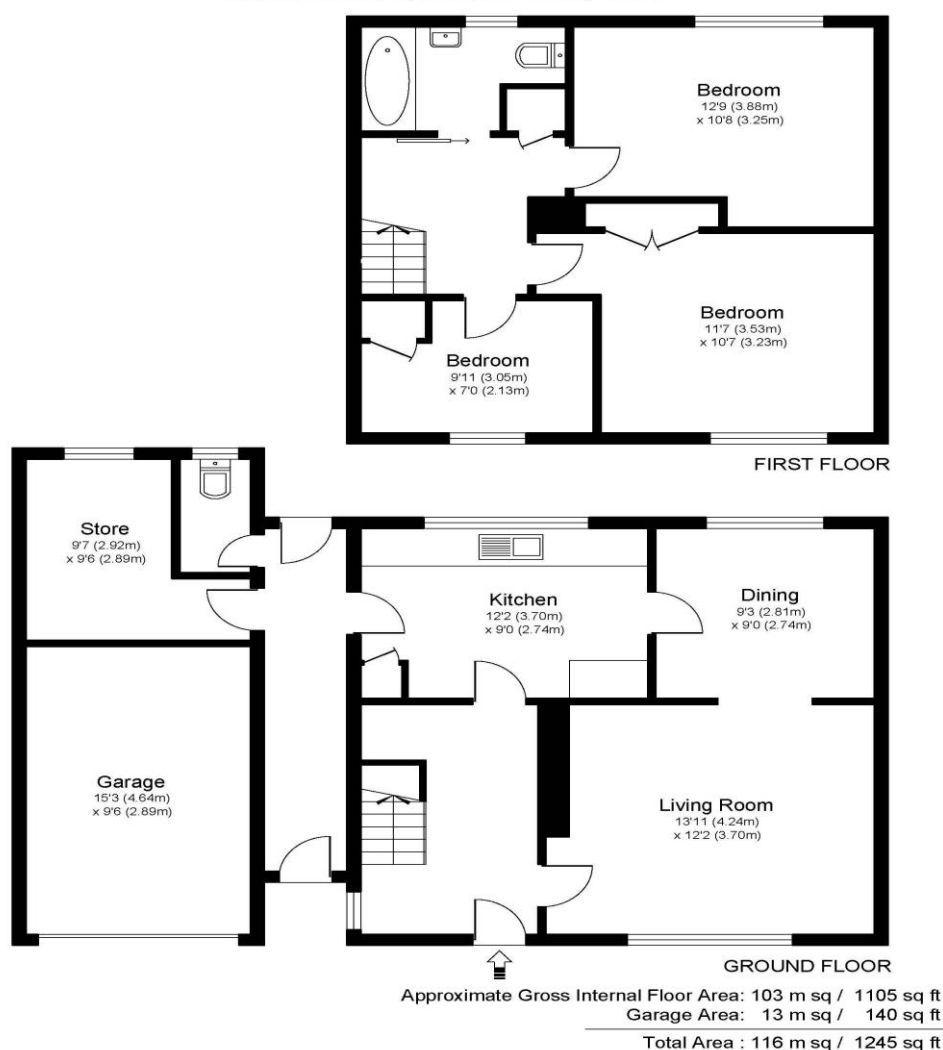


8 Palm Grove Guildford Surrey GU1 1JP

£2250pcm + Initial deposit



PALM GROVE, GUILDFORD, GU1



Whilst every attempt has been made to ensure the accuracy of the floor plan contained here, measurements of doors, windows and rooms are approximate and no responsibility is taken for any error, omission or misstatements. These plans are not to scale and are for representation purposes only as defined by RICS Code of Measuring Practice and should be used as such by any prospective purchaser. Specifically no guarantee is given on total square footage of the property if quoted on this plan. Any figure given is for initial guidance only and should not be relied on as a basis of valuation.

A three-bedroom semi-detached family home which is situated in a peaceful cul-de sac location within three miles of Guildford town centre. The property benefits from three bedrooms, two doubles and one single, two reception rooms, modern kitchen with a newly installed oven and a contemporary bathroom. Outside there an internal walkway leading to a store, outside WC and low maintenance rear garden. The front has ample off-street parking for several cars. Transport links are provided by Guildford railway station and the nearby A3.

Available Now, unfurnished. EPC Rating C.



AGENTS NOTES: These details do not constitute any part of an offer or contract. In issuing them we do not have any authority to give any warranty or representation whatsoever in respect of this property. These details are provided without any responsibility on our part or the part of the vendors. No statements in these details are to be relied upon as representations of fact and purchasers should satisfy themselves by inspection or otherwise as to the accuracy of the statements contained therein.

Equipment: We have not tested the equipment or central heating system mentioned in these particulars and purchasers are advised to satisfy themselves as to their working order and condition.

Measurements: Great care is taken when measuring but measurements should not be relied upon for ordering carpets, equipment, etc.