

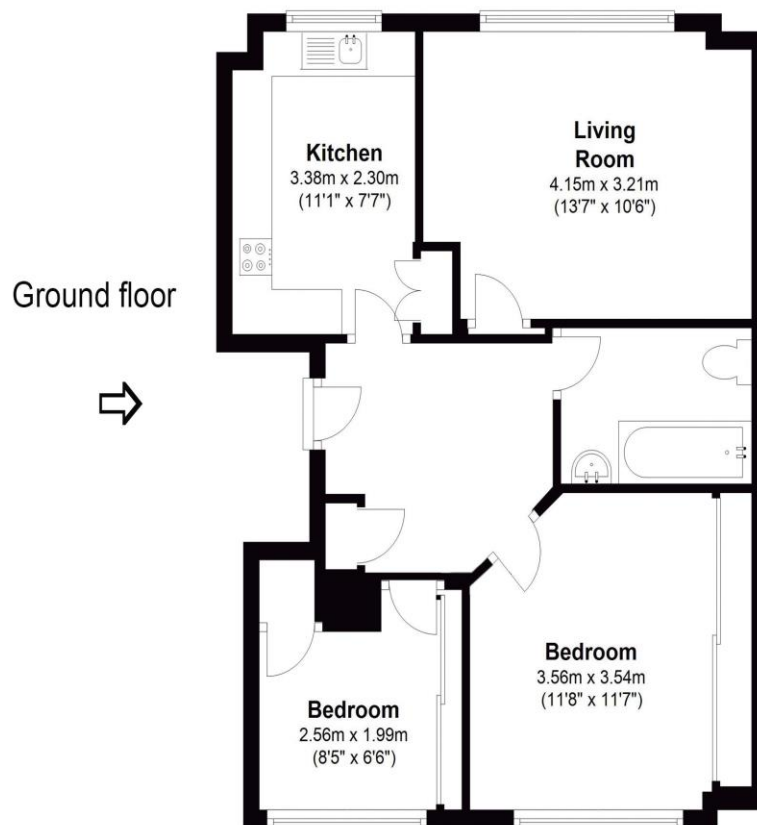


12a Rodwell Court Hersham Road Walton-On-Thames Surrey KT12 1RE

£1450pcm + Initial deposit



Approximate gross internal floor area 560 Sq Ft 52 Sq M



Whilst every attempt has been made to ensure the accuracy of the floor plan contained here, measurements are approximate and no responsibility is taken for any error, omission, or mis-statement. The plan is for illustrative purposes only and should be used as such by any prospective purchaser.

This beautifully presented two-bedroom ground floor flat is situated within a popular development, just a short walk from Walton Mainline Station. The flat has recently undergone a makeover, featuring a stunning new kitchen, refreshed flooring, and fresh redecoration throughout. Both bedrooms offer storage space, and the living room and kitchen are separate rooms. The bathroom includes a shower over the bath for added convenience. Additional benefits include a secure entry system, a garage in a block, and a residents' parking permit. With local shops and amenities right on your doorstep, and Walton town centre just a mile away, this property offers both comfort and convenience. Offered to rent unfurnished, available now. EPC Rating C.



AGENTS NOTES: These details do not constitute any part of an offer or contract. In issuing them we do not have any authority to give any warranty or representation whatsoever in respect of this property. These details are provided without any responsibility on our part or the part of the vendors. No statements in these details are to be relied upon as representations of fact and purchasers should satisfy themselves by inspection or otherwise as to the accuracy of the statements contained therein.

Equipment: We have not tested the equipment or central heating system mentioned in these particulars and purchasers are advised to satisfy themselves as to their working order and condition.

Measurements: Great care is taken when measuring but measurements should not be relied upon for ordering carpets, equipment, etc.