

JAMES NEAVE
THE ESTATE AGENTS



16 Cleve Place Bridgewater Road Weybridge Surrey KT13 0ER

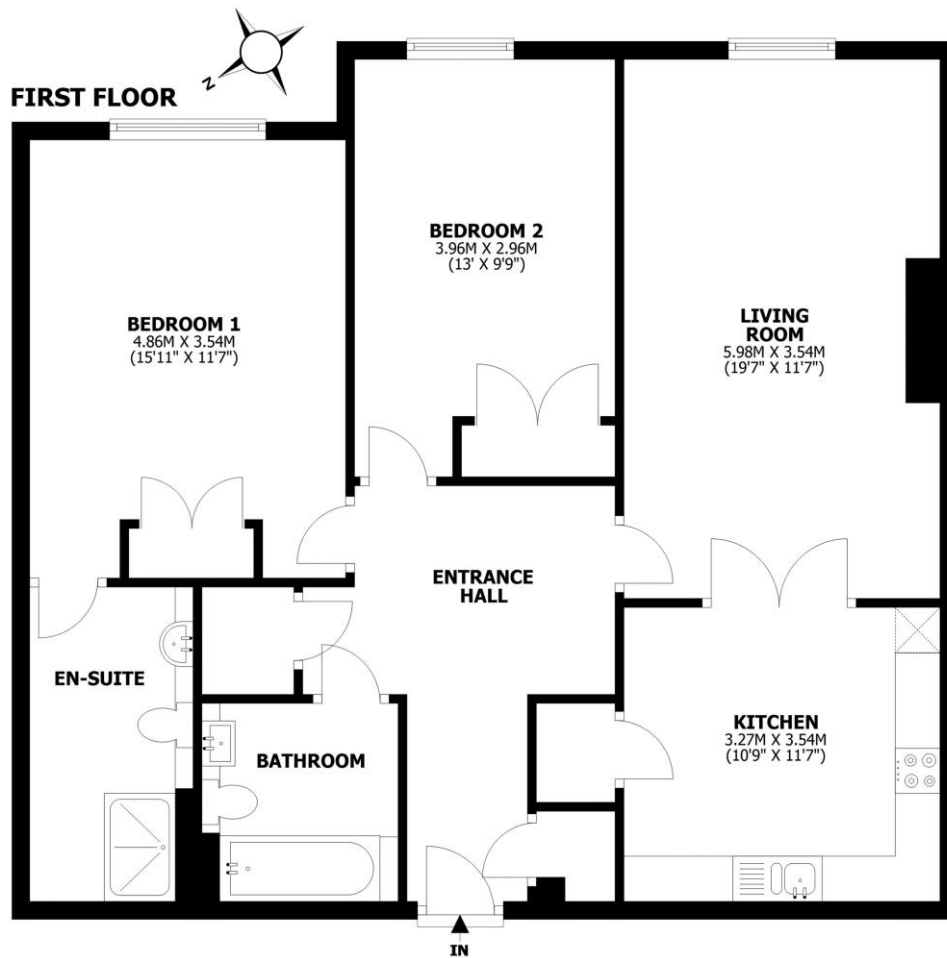
£450,000





Cleve Place, Walton-on-Thames, KT13

Total area: approx. 92.0 sq. metres (990.0 sq. feet)



This floorplan is for illustrative guidance only and is not to drawn to scale. Whilst every attempt has been made to ensure accuracy, measurements are approximate and should not be relied upon as a matter of fact. Maximum dimensions are given excluding small alcoves, etc unless otherwise stated.

For sale with no onward chain, a spacious two-bedroom two-bathroom apartment set within this established and well-maintained block benefiting from secure underground parking and a share of freehold. Internally this is a lovely home with large rooms and plenty of space. There are two double bedrooms both with built in wardrobes. The main bedroom also has an en suite and there is a main family bathroom providing two bathrooms throughout. The kitchen is offset from the living space and can be left open or closed off depending on your preference. Externally this block offers plenty with a gated entrance and underground car for residents of which you get one allocated space. Located within this exclusive area of, Weybridge a good central spot for amenities transport links. EPC Rating C.



AGENTS NOTES: These details do not constitute any part of an offer or contract. In issuing them we do not have any authority to give any warranty or representation whatsoever in respect of this property. These details are provided without any responsibility on our part or the part of the vendors. No statements in these details are to be relied upon as representations of fact and purchasers should satisfy themselves by inspection or otherwise as to the accuracy of the statements contained therein.

Equipment: We have not tested the equipment or central heating system mentioned in these particulars and purchasers are advised to satisfy themselves as to their working order and condition.

Measurements: Great care is taken when measuring but measurements should not be relied upon for ordering carpets, equipment, etc.