



30 Bridge House Bridge Street Walton-On-Thames Surrey KT12 1AL

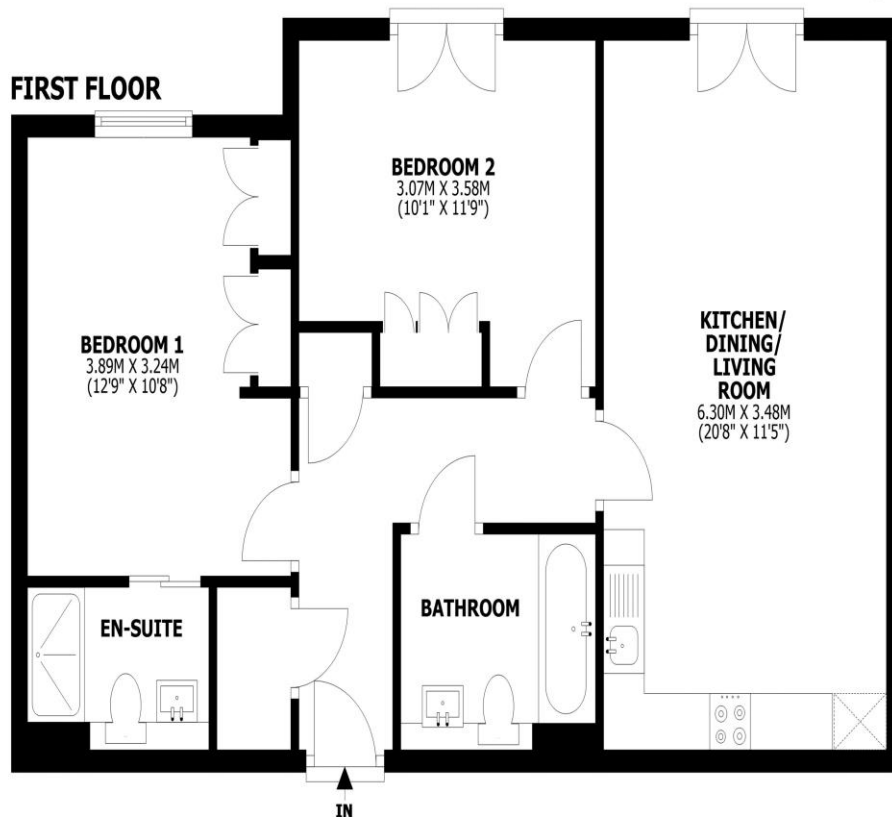
£375,000





Bridge House, Bridge Street, Walton-on-Thames, KT12

Total area: approx. 63.5 sq. metres (683.3 sq. feet)



This floorplan is for illustrative guidance only and is not to drawn to scale. Whilst every attempt has been made to ensure accuracy, measurements are approximate and should not be relied upon as a matter of fact. Maximum dimensions are given excluding small alcoves, etc unless otherwise stated.

Offered with no onward chain, this stunning two-bedroom, two-bathroom apartment was built in 2018 by Shanly Homes and is presented in immaculate condition throughout. Finished to the highest standard, the apartment exudes a luxurious feel with quality fittings and a modern design. Situated on the first floor, the apartment boasts a spacious open-plan living area and kitchen, featuring shaker-style units and integrated appliances, with a Juliet balcony extending from the lounge. Both bedrooms are doubles, with the master benefiting from an en-suite shower room, while the second bedroom includes a fitted wardrobe and its own Juliet balcony. The main bathroom offers a white suite with a shower over the bath. With a south-west facing aspect, the apartment is flooded with natural light throughout the day. The development benefits from a secure entry system and a lift, plus the property comes with an allocated parking space. Located in a highly sought-after area, both the town centre and River Thames are just a short walk away. The nearby river towpath offers scenic walks towards Weybridge and Hampton Court, with several popular pubs along the way. Viewings are highly recommended to fully appreciate this beautiful home. EPC Rating B.



AGENTS NOTES: These details do not constitute any part of an offer or contract. In issuing them we do not have any authority to give any warranty or representation whatsoever in respect of this property. These details are provided without any responsibility on our part or the part of the vendors. No statements in these details are to be relied upon as representations of fact and purchasers should satisfy themselves by inspection or otherwise as to the accuracy of the statements contained therein.

Equipment: We have not tested the equipment or central heating system mentioned in these particulars and purchasers are advised to satisfy themselves as to their working order and condition.

Measurements: Great care is taken when measuring but measurements should not be relied upon for ordering carpets, equipment, etc.