



34 Fisher Close Hersham Walton-On-Thames Surrey KT12 5PN

£625,000



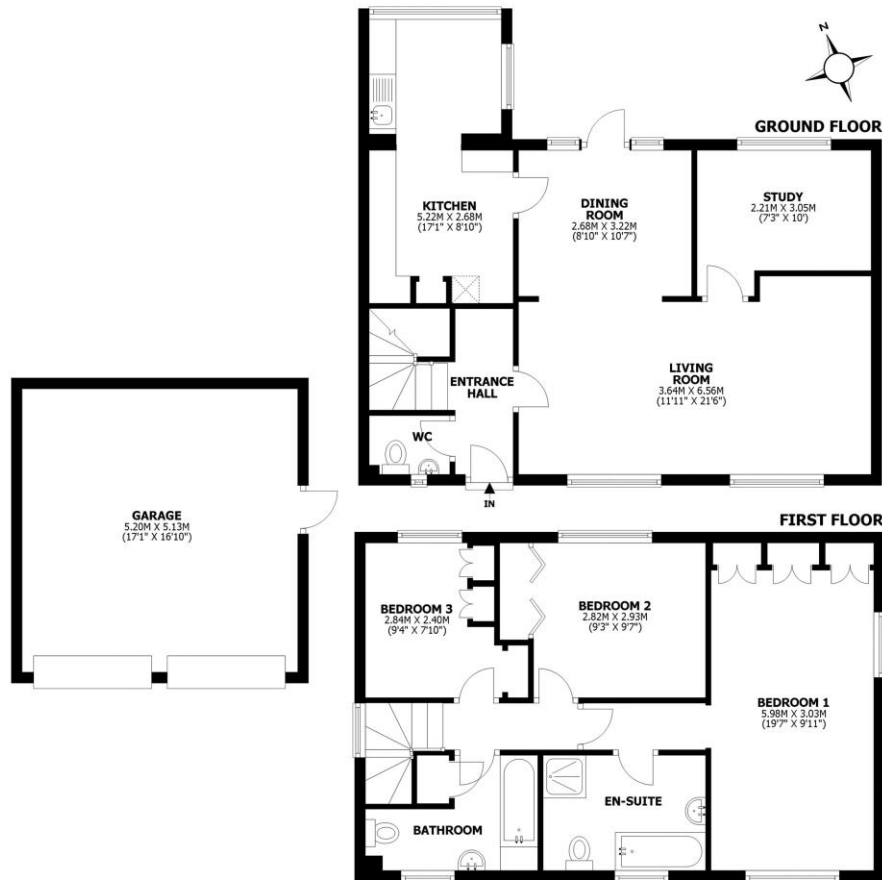


Fisher Close, Walton-on-Thames, KT12

Total internal area: approx. 143.2 sq. metres (1541 sq. feet)

Main area: approx. 116.5 sq. metres (1253.9 sq. feet)

Garage: approx. 26.7 sq. metres (287.1 sq. feet)



This floorplan is for illustrative guidance only and is not to drawn to scale. Whilst every attempt has been made to ensure accuracy, measurements are approximate and should not be relied upon as a matter of fact. Maximum dimensions are given excluding small alcoves, etc unless otherwise stated.

For Sale with no onward chain, this extended three-bedroom, two-bathroom detached home is perfectly situated on a popular residential cul-de-sac, boasting a double-width garage and significant potential to modernize. The ground floor offers a fantastic sense of space, featuring a L-shaped living and dining area perfect for entertaining, a dedicated study, and an extended kitchen. Upstairs, the primary bedroom serves as a private retreat with fitted wardrobes and an en-suite, complemented by two further bedrooms and a family bathroom. There is also a downstairs cloakroom for added convenience. Externally, the property features off-street parking and a private rear garden with a patio and lawn—ideal for summer dining. A major feature of this home is the double width garage offering excellent parking, storage or workshop facilities. Located just moments from Walton mainline station (London Waterloo in 26 minutes) and the local amenities of The Halfway, you are also within easy reach of Hersham Village and Walton Town Centre. EPC Rating C.



AGENTS NOTES: These details do not constitute any part of an offer or contract. In issuing them we do not have any authority to give any warranty or representation whatsoever in respect of this property. These details are provided without any responsibility on our part or the part of the vendors. No statements in these details are to be relied upon as representations of fact and purchasers should satisfy themselves by inspection or otherwise as to the accuracy of the statements contained therein.

Equipment: We have not tested the equipment or central heating system mentioned in these particulars and purchasers are advised to satisfy themselves as to their working order and condition.

Measurements: Great care is taken when measuring but measurements should not be relied upon for ordering carpets, equipment, etc.