



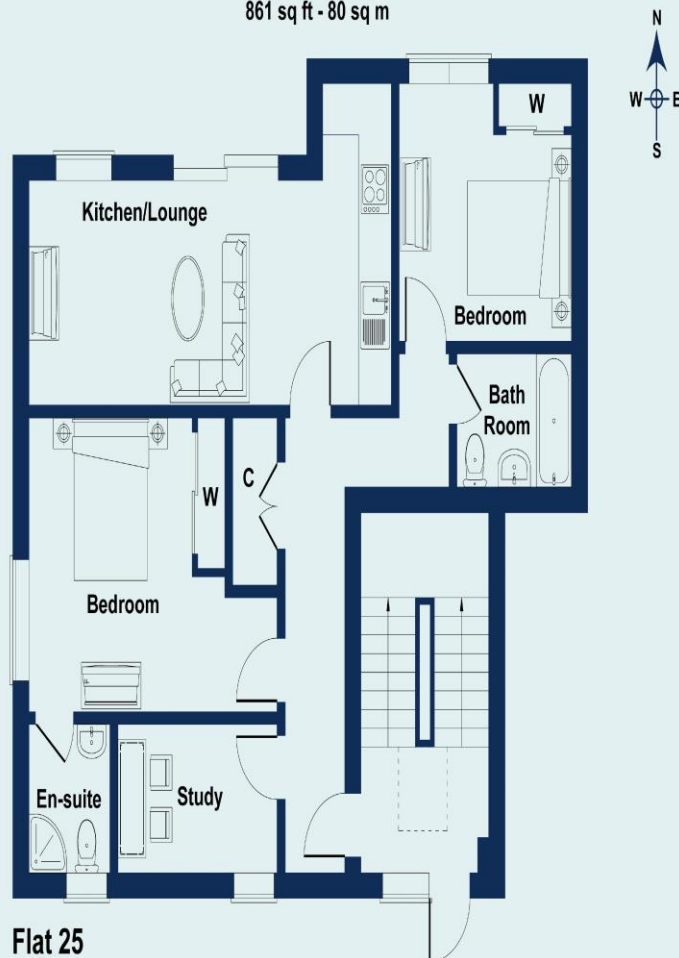
25 Auckland House New Zealand Avenue Walton-On-Thames Surrey KT12 1PL

£2500pcm + Initial Deposit



Flats 25 Auckland House, Walton on Thames, Surrey, KT12 1PL

Approximate Gross Internal Area
861 sq ft - 80 sq m



Not to Scale. Produced by The Plan Portal 2025
For Illustrative Purposes Only.

A brand new, two-bedroom plus study (can easily be a 3rd bedroom if required) apartment ideally located in Walton town centre within 1 mile approx. of Walton Mainline Train Station. Internally this is an amazing apartment with a lot of space to enjoy. There is plenty of living space plus two large double bedrooms both with built in wardrobes. There is also an en-suite to the main bedroom. There is an additional study room which can be used as a third bedroom if required. The living space has plenty of windows and natural light, there is a Juliet style balcony also. The kitchen and bathrooms are all brand new and well styled for luxury and your convenience. Set on the top floor of this newly created development, above the already established Auckland House. There is lift access for ease. Ideally located within Walton town centre just moments from the High Street. There are loads of amenities on hand including shops, restaurants, supermarkets & an Everyman Cinema. Walton on Thames mainline train station is just under 1 mile away and offers a fast train service to London Waterloo. EPC Rating B.



AGENTS NOTES: These details do not constitute any part of an offer or contract. In issuing them we do not have any authority to give any warranty or representation whatsoever in respect of this property. These details are provided without any responsibility on our part or the part of the vendors. No statements in these details are to be relied upon as representations of fact and purchasers should satisfy themselves by inspection or otherwise as to the accuracy of the statements contained therein.

Equipment: We have not tested the equipment or central heating system mentioned in these particulars and purchasers are advised to satisfy themselves as to their working order and condition.

Measurements: Great care is taken when measuring but measurements should not be relied upon for ordering carpets, equipment, etc.