



23 Somers House Spitfire Chase Walton-On-Thames Surrey KT12 1FW

£325,000

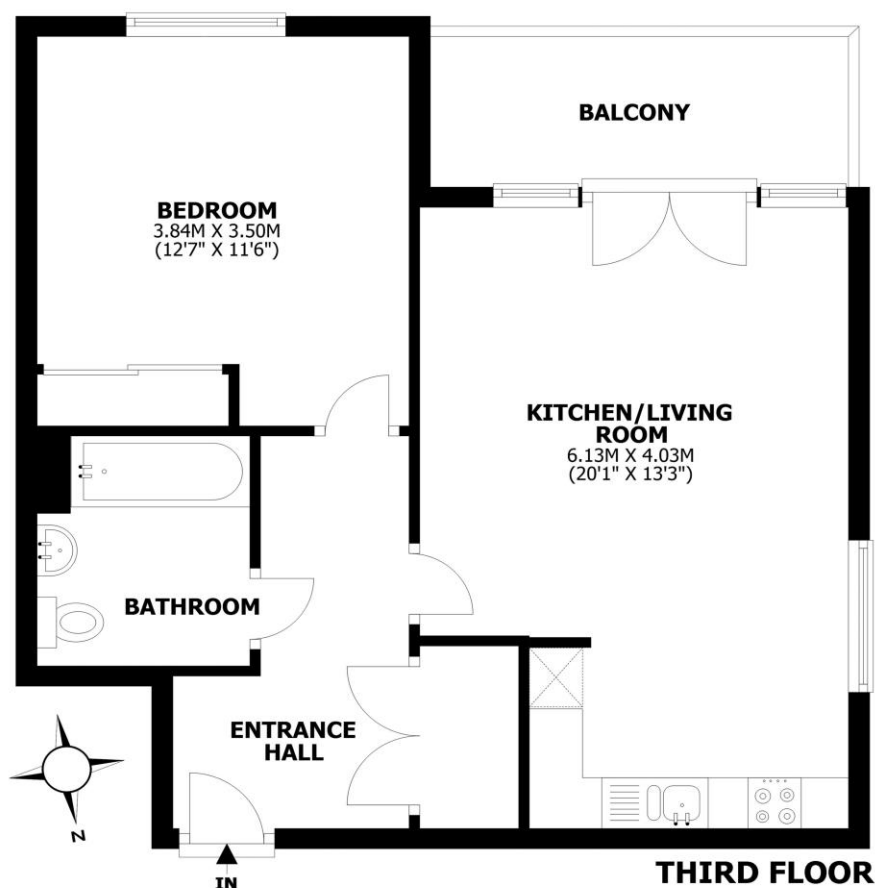




Somers House, Spitfire Chase, Walton-on-Thames, KT12

Total internal area: approx. 50.6 sq. metres (544.2 sq. feet)

Balcony: approx. 5.6 sq. metres (60.7 sq. feet)



This floorplan is for illustrative guidance only and is not to drawn to scale. Whilst every attempt has been made to ensure accuracy, measurements are approximate and should not be relied upon as a matter of fact. Maximum dimensions are given excluding small alcoves, etc unless otherwise stated.

This beautiful one-bedroom apartment, for sale with no onward chain, is located in the highly sought-after Walton Court Gardens development, built by Crest Nicholson. The development is popular due to its modern style and superb location, with Walton mainline station just moments away, offering quick trains to London Waterloo in just 26 minutes. Walton High Street, with its range of shops, restaurants, and the Everyman Cinema, is also just a mile away. Plus you have the Halfway amenities close by including a Tesco Express. The apartment itself has been finished to a high standard and is in excellent condition, featuring stylish fixtures and fittings. It boasts an open-plan living room and kitchen, with a balcony off the living area, perfect for relaxing or entertaining. The bedroom is a spacious double with fitted wardrobes, and there is a luxurious bathroom with a shower over the bath. Additional storage is conveniently located off the hallway. The property benefits from a long lease of 999 years from new, and the service charges are very affordable. Included in the service charge is access to the on-site gym, and there are nice communal garden areas to use. The apartment also comes with secure allocated parking for one car. The development's secure entrance, large lobby, and lift access to all floors further enhance the appeal of this modern apartment. With its prime location and attractive features, this is an excellent option for first-time buyers or investors. EPC Rating: C.



AGENTS NOTES: These details do not constitute any part of an offer or contract. In issuing them we do not have any authority to give any warranty or representation whatsoever in respect of this property. These details are provided without any responsibility on our part or the part of the vendors. No statements in these details are to be relied upon as representations of fact and purchasers should satisfy themselves by inspection or otherwise as to the accuracy of the statements contained therein.

Equipment: We have not tested the equipment or central heating system mentioned in these particulars and purchasers are advised to satisfy themselves as to their working order and condition.

Measurements: Great care is taken when measuring but measurements should not be relied upon for ordering carpets, equipment, etc.