

JAMES NEAVE
THE ESTATE AGENTS



9 Edward Place Churchfield Road Walton-On-Thames Surrey KT12 2FR

£5850.00



Approximate room sizes:

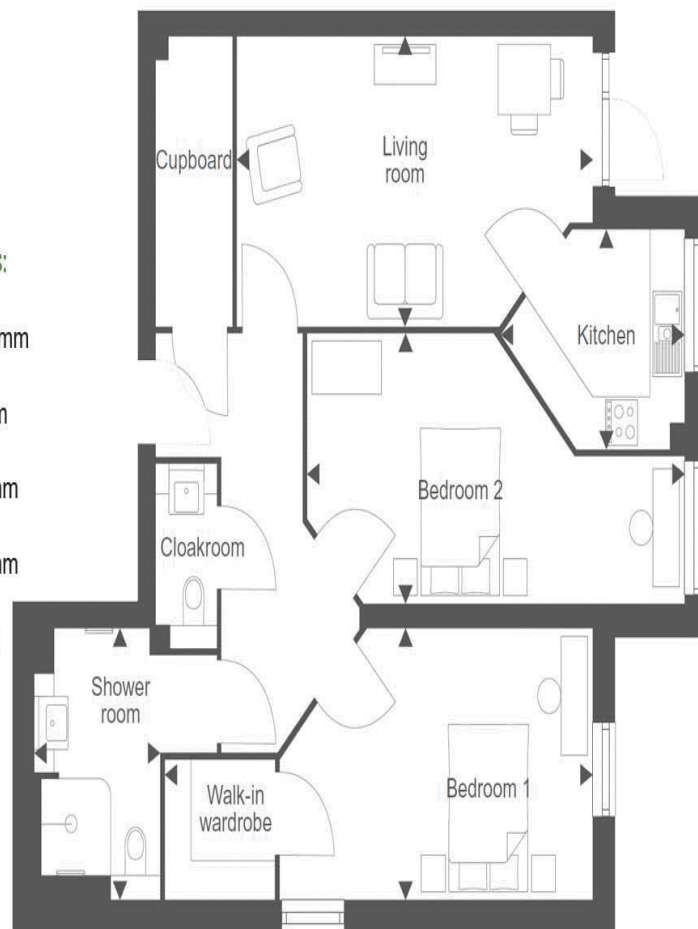
Living room
10'10" x 20'0" / 3302mm x 6099mm

Kitchen
8'3" x 10'4" / 2505mm x 3160mm

Bedroom 1
10'2" x 24'1" / 3094mm x 7335mm

Bedroom 2
10'1" x 24'1" / 3077mm x 7335mm

Shower room
9'3" x 7'1" / 2820mm x 2164mm



Retirement apartments exclusively for the over 70s. A lovely place to call home, Edward Place is ideally located on Churchfield Road in Walton-on-Thames, just a short walk away from the bustling High Street and the Heart Shopping Centre. Here you will find an array of cafes, a public library, Sainsbury's and a parade of restaurants. Retirement Living Plus offers so much more than a new apartment. The stylish on-site communal areas allow you to socialise with neighbours and meet new friends, whilst you also have the privacy of your privately owned apartment when you need it. Residents can enjoy an elegant communal lounge and restaurant, serving freshly prepared meals daily as well as drinks and snacks. The restaurant also boasts a bistro essentials shop, selling everyday items such as bread and milk. The private courtyard gardens are thoughtfully landscaped, full of life and colour and are professionally maintained for you to enjoy all year round. All apartments feature a fully fitted and easily accessible kitchen, and a walk-in shower with a stylish rain shower feature and slip-resistant tiling. Security and comfort is ensured with intruder alarms, a camera entry system and an Estates Manager to ensure that every resident feels safe at all times. There is also wheelchair access and lifts to all floors for those with limited mobility. A dedicated Estates Management team are on-site 24 hours a day to provide peace of mind and help. If additional care is needed, we can provide this too, with flexible care and support packages available. Edward Place has been thoughtfully designed with retirees in mind and offers independent living with assistance on hand when needed, in a beautiful and safe environment. Available 24th March 2025. Unfurnished. EPC Rating B.



AGENTS NOTES: These details do not constitute any part of an offer or contract. In issuing them we do not have any authority to give any warranty or representation whatsoever in respect of this property. These details are provided without any responsibility on our part or the part of the vendors. No statements in these details are to be relied upon as representations of fact and purchasers should satisfy themselves by inspection or otherwise as to the accuracy of the statements contained therein.

Equipment: We have not tested the equipment or central heating system mentioned in these particulars and purchasers are advised to satisfy themselves as to their working order and condition.

Measurements: Great care is taken when measuring but measurements should not be relied upon for ordering carpets, equipment, etc.