



36 Felcott Road Hersham Walton-On-Thames Surrey KT12 5NS

£600,000



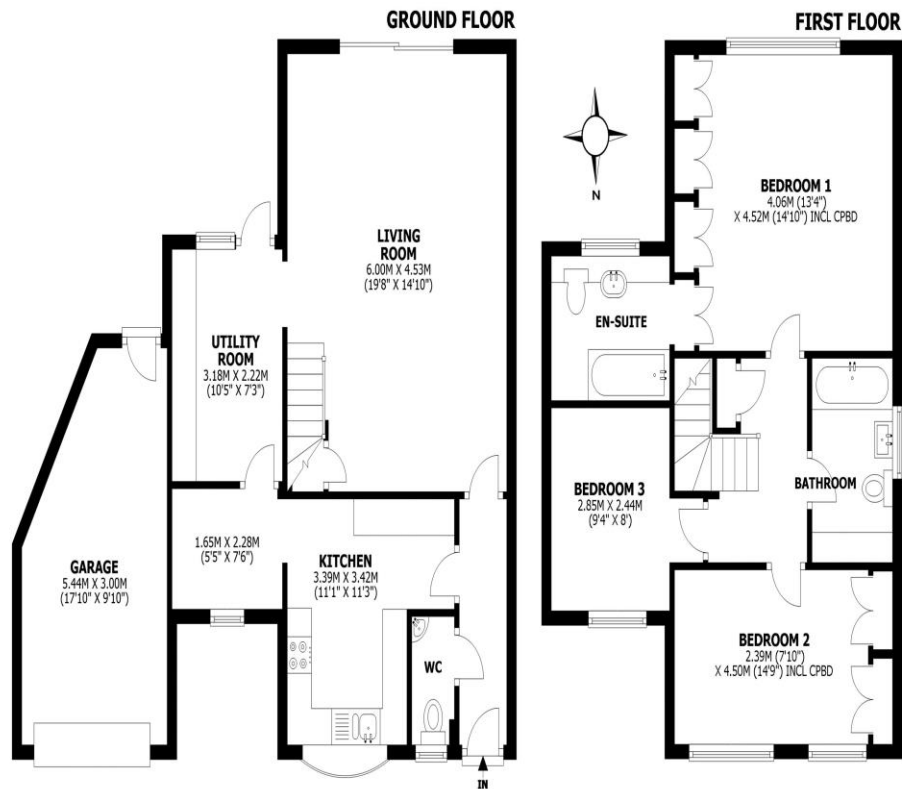


Felcott Road, Walton-on-Thames, KT12

Total internal area: approx. 124 sq. metres (1334.7 sq. feet)

Main area: approx. 109.8 sq. metres (1181.9 sq. feet)

Garage: approx. 14.2 sq. metres (152.8 sq. feet)



This floorplan is for illustrative guidance only and is not to drawn to scale. Whilst every attempt has been made to ensure accuracy, measurements are approximate and should not be relied upon as a matter of fact. Maximum dimensions are given excluding small alcoves, etc unless otherwise stated.

For sale with no onward chain, a spacious three-bedroom detached house with garage and off-street parking. Well-located in this popular residential position not far from shops, schools and train station. The home is well-presented and has a nice neutral feel to it throughout. There is an upstairs family bathroom alongside a "hidden" en-suite on the main bedroom and a downstairs cloakroom. The three bedrooms are all good sizes and there is plenty of built in wardrobe space. The living space is all on the ground floor with a large reception room to the rear of the home opening onto the south facing garden. The kitchen to the front and has been recently refurbished, there is then a further two utility rooms. Externally we have a front and rear gardens, the rear facing south. There is a garage and off street parking. A great location with the mainline train station not far away. Walton on Thames is serviced by the fast train into London Waterloo. There are local shops also in proximity and the Three Rivers Academy is just around the corner. Offered for sale with no onward chain. EPC Rating D.



AGENTS NOTES: These details do not constitute any part of an offer or contract. In issuing them we do not have any authority to give any warranty or representation whatsoever in respect of this property. These details are provided without any responsibility on our part or the part of the vendors. No statements in these details are to be relied upon as representations of fact and purchasers should satisfy themselves by inspection or otherwise as to the accuracy of the statements contained therein.

Equipment: We have not tested the equipment or central heating system mentioned in these particulars and purchasers are advised to satisfy themselves as to their working order and condition.

Measurements: Great care is taken when measuring but measurements should not be relied upon for ordering carpets, equipment, etc.