

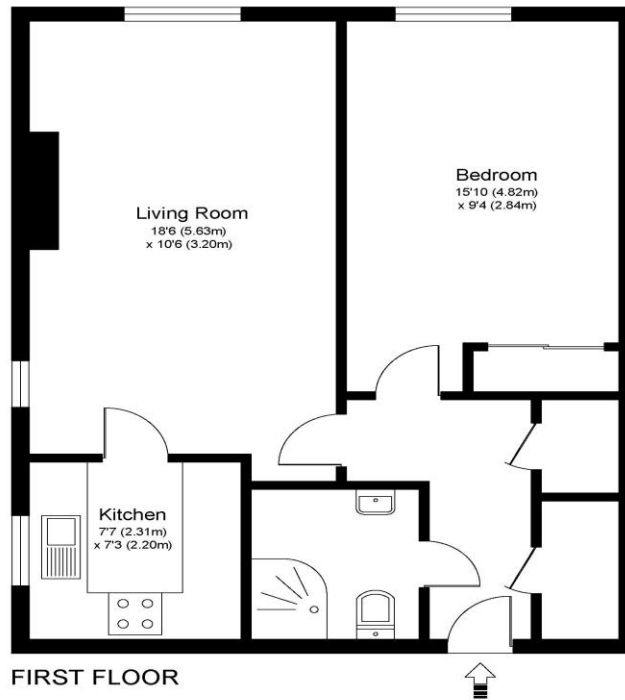


25 Ash Lodge Churchfield Road Walton-On-Thames Surrey KT12 2EZ

£1375pcm + Initial deposit



ASH LODGE, WALTON ON THAMES, KT12



Approximate Gross Internal Floor Area: 47 m sq / 510 sq ft

Whilst every attempt has been made to ensure the accuracy of the floor plan contained here, measurements of doors, windows and rooms are approximate and no responsibility is taken for any error, omission or misstatements. These plans are not to scale and are for representation purposes only as defined by RICS Code of Measuring Practice and should be used as such by any prospective purchaser. Specifically no guarantee is given on total square footage of the property if quoted on this plan. Any figure given is for initial guidance only and should not be relied on as a basis of valuation.

A one-bedroom upper floor apartment (with lift) positioned in this over 55's retirement block. Ideally situated just a few moments from the High Street meaning this is a safe, secure, and convenient lifestyle choice. Internally this a nice apartment that is neutrally decorated. The main living room is lovely and light, and the bedroom is a good double room with built-in wardrobes. There are also good storage facilities throughout the property. The communal facilities in the block are outstanding with on site features such as a communal lounge, gardens, laundry room and mobility scooter storage space. There is an onsite lodge manager and care line with central monitoring. The block has secure entry and is well maintained and managed from top to bottom. There is a resident's car park where spaces can be allocated on a first come first serve basis. Located within the centre of Walton-on-Thames with easy access to the High Street amenities. The town centre offers a selection of restaurants, supermarkets and banks alongside the Heart shopping centre and an Everyman Cinema. If you are looking to move, or looking for a loved one to move, to a safe, secure and convenient lifestyle then we feel this could be an ideal solution for you. Available NOW, unfurnished. EPC Rating C.



AGENTS NOTES: These details do not constitute any part of an offer or contract. In issuing them we do not have any authority to give any warranty or representation whatsoever in respect of this property. These details are provided without any responsibility on our part or the part of the vendors. No statements in these details are to be relied upon as representations of fact and purchasers should satisfy themselves by inspection or otherwise as to the accuracy of the statements contained therein.

Equipment: We have not tested the equipment or central heating system mentioned in these particulars and purchasers are advised to satisfy themselves as to their working order and condition.

Measurements: Great care is taken when measuring but measurements should not be relied upon for ordering carpets, equipment, etc.