

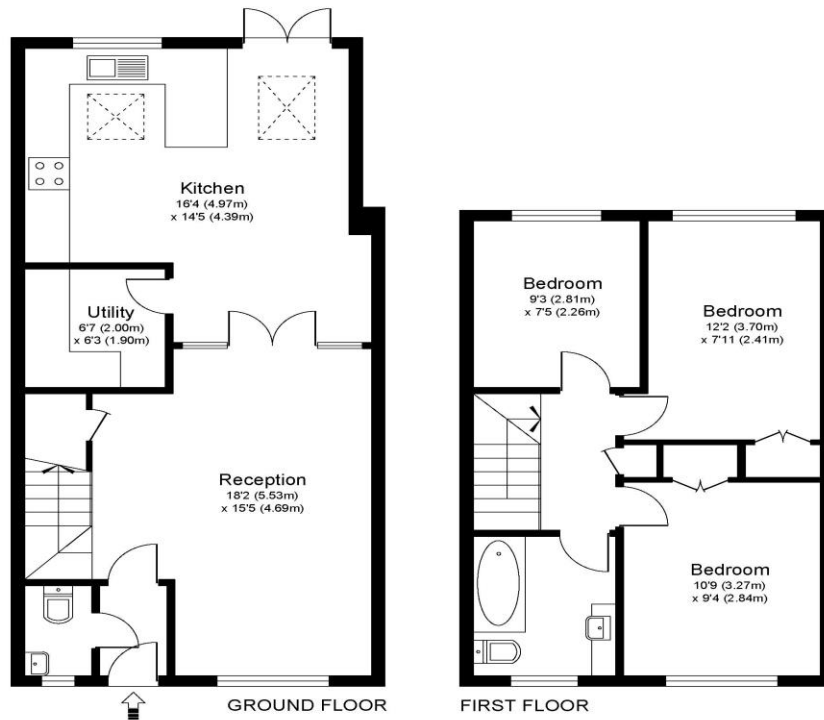


26 Dunsmore Road Walton-On-Thames Surrey KT12 2LJ

£2200pcm + Initial deposit



DUNSMORE ROAD KT12



Approximate Gross Internal Floor Area: 83 m sq / 894 sq ft

Whilst every attempt has been made to ensure the accuracy of the floor plan contained here, measurements of doors, windows and rooms are approximate and no responsibility is taken for any error, omission or misstatements. These plans are not to scale and are for representation purposes only as defined by RICS Code of Measuring Practice and should be used as such by any prospective purchaser. Specifically no guarantee is given on total square footage of the property if quoted on this plan. Any figure given is for initial guidance only and should not be relied on as a basis of valuation.

This three-bedroom home is offered to rent in great condition throughout, and benefits from a lovely kitchen/diner and a garage in a block. The house is in a popular quiet road which is close to the River Thames towpath, the Xcel leisure centre and the Terrace Road shops.

This is also a good position for local schools with Grovelands Primary and the Walton Heathside secondary school both not far away. Internally you have a front lounge with bay window, a rear kitchen/diner with utility room, a downstairs toilet, three bedrooms, and family bathroom. There is off-street parking to the front and a garage in a block behind. The garden has a mix of lawn and patio. Offered to rent unfurnished and available now. EPC Rating C.



AGENTS NOTES: These details do not constitute any part of an offer or contract. In issuing them we do not have any authority to give any warranty or representation whatsoever in respect of this property. These details are provided without any responsibility on our part or the part of the vendors. No statements in these details are to be relied upon as representations of fact and purchasers should satisfy themselves by inspection or otherwise as to the accuracy of the statements contained therein.

Equipment: We have not tested the equipment or central heating system mentioned in these particulars and purchasers are advised to satisfy themselves as to their working order and condition.

Measurements: Great care is taken when measuring but measurements should not be relied upon for ordering carpets, equipment, etc.