

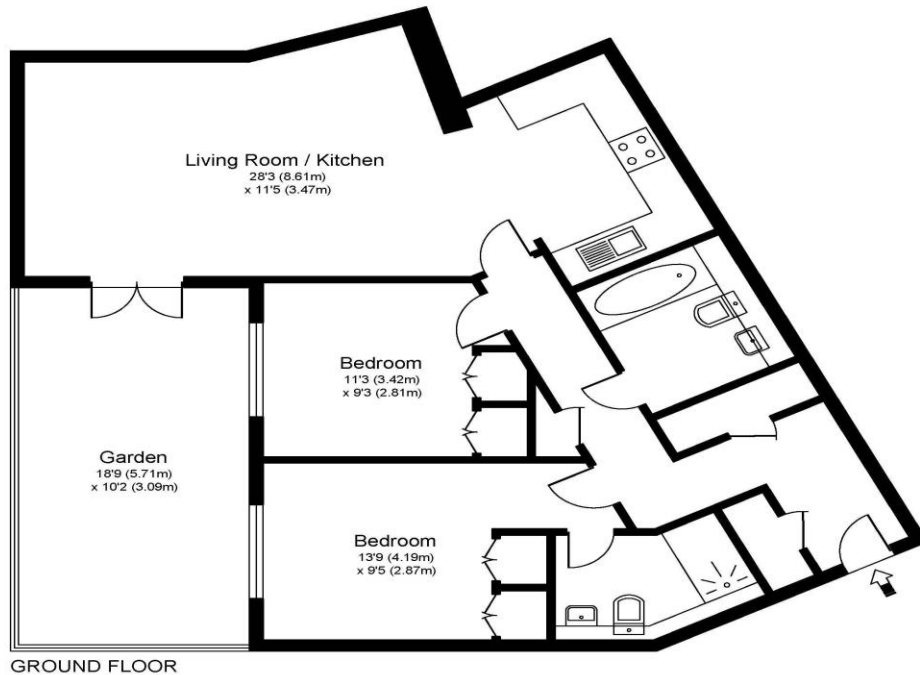


3 Bridge House Bridge Street Walton-On-Thames Surrey KT12 1AL

£435,000



BRIDGE HOUSE, BRIDGE STREET, WALTON ON THAMES, KT12



Approximate Gross Internal Floor Area: 71 m sq / 765 sq ft

Whilst every attempt has been made to ensure the accuracy of the floor plan contained here, measurements of doors, windows and rooms are approximate and no responsibility is taken for any error, omission or misstatements. These plans are not to scale and are for representation purposes only as defined by RICS Code of Measuring Practice and should be used as such by any prospective purchaser. Specifically no guarantee is given on total square footage of the property if quoted on this plan. Any figure given is for initial guidance only and should not be relied on as a basis of valuation.

This beautiful two-bedroom, two-bathroom apartment was built in 2018 by Shanly Homes and is offered in fantastic condition throughout. The apartment has been finished to an incredibly high standard with quality fittings and has a real luxury feel to it. Situated on the ground floor and comprising of an open plan living room and kitchen with shaker style units and fitted appliances. The bedrooms are both doubles with the main benefiting from an en-suite shower room and fitted wardrobe space. The bathroom has a white suite with shower over bath. The flat has direct access from the living room out to a communal garden space which has been fenced to give it a more private feel for your use. It offers a tranquil space to relax. The development has a secure entry system and this flat comes with an allocated parking space. It is located in a convenient and popular location, with both the town centre and River Thames reachable within a couple of minutes' walk. The river tow path offers lovely walks towards Weybridge and Hampton Court and has a few popular pubs along the way. Viewings are highly recommended to really appreciate this beautiful development. EPC Rating B.



AGENTS NOTES: These details do not constitute any part of an offer or contract. In issuing them we do not have any authority to give any warranty or representation whatsoever in respect of this property. These details are provided without any responsibility on our part or the part of the vendors. No statements in these details are to be relied upon as representations of fact and purchasers should satisfy themselves by inspection or otherwise as to the accuracy of the statements contained therein.

Equipment: We have not tested the equipment or central heating system mentioned in these particulars and purchasers are advised to satisfy themselves as to their working order and condition.

Measurements: Great care is taken when measuring but measurements should not be relied upon for ordering carpets, equipment, etc.