

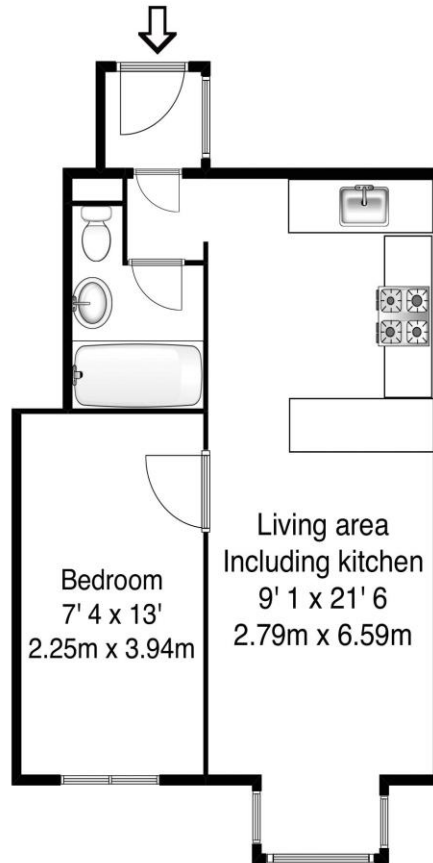


Flat 4,87 Kings Road Walton-On-Thames Surrey KT12 2RD

£1250pcm + Initial deposit



Approximate gross internal floor area 355 Sq Ft 33 Sq M



Whilst every attempt has been made to ensure the accuracy of the floor plan contained here, measurements are approximate and no responsibility is taken for any error, omission, or mis-statement. The plan is for illustrative purposes only and should be used as such by any prospective purchaser.

A ground floor one bedroom maisonette superbly located on Kings Road, Walton on Thames. Offered in good order with an open-plan lounge/kitchen, a double bedroom and a bathroom. There is also a small private garden and residents parking for one car. A great location within walking distance of the town centre and Walton mainline train station.

Available now, unfurnished. EPC Rating C.



AGENTS NOTES: These details do not constitute any part of an offer or contract. In issuing them we do not have any authority to give any warranty or representation whatsoever in respect of this property. These details are provided without any responsibility on our part or the part of the vendors. No statements in these details are to be relied upon as representations of fact and purchasers should satisfy themselves by inspection or otherwise as to the accuracy of the statements contained therein.

Equipment: We have not tested the equipment or central heating system mentioned in these particulars and purchasers are advised to satisfy themselves as to their working order and condition.

Measurements: Great care is taken when measuring but measurements should not be relied upon for ordering carpets, equipment, etc.