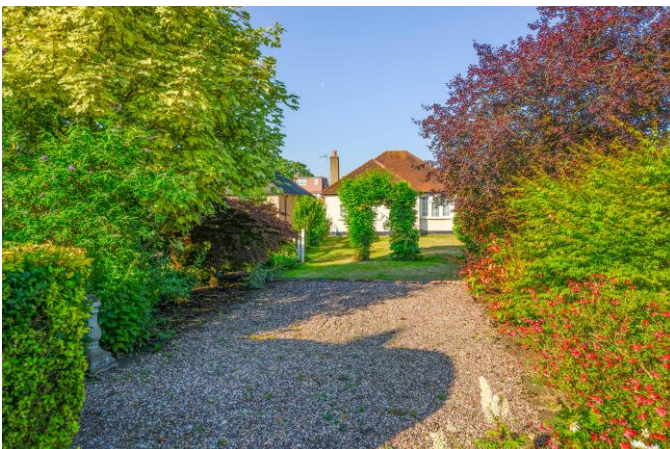


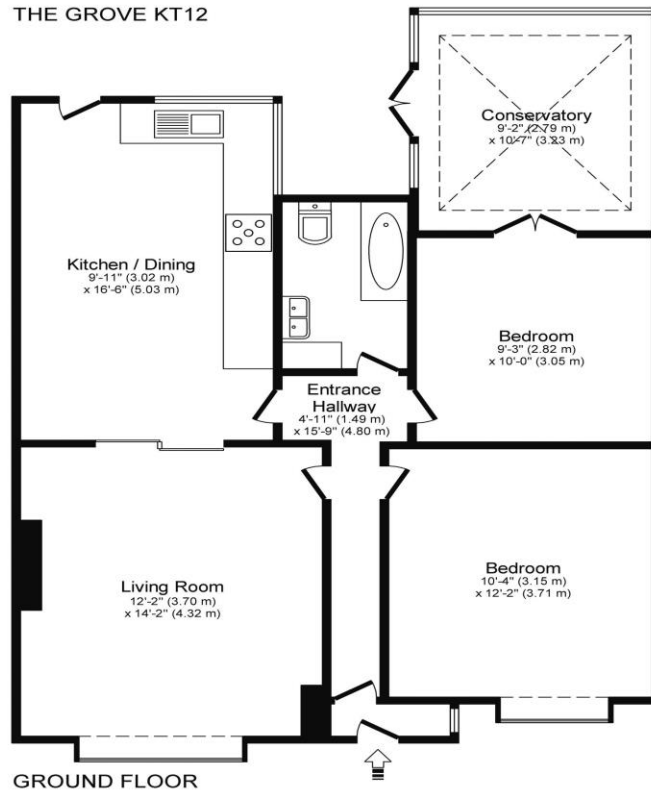


28 The Grove Walton-On-Thames Surrey KT12 2HP

£1850pcm + Initial deposit



THE GROVE KT12



Approximate Gross Internal Floor Area: 68 m sq / 732 sq ft

Whilst every attempt has been made to ensure the accuracy of the floor plan contained here, measurements of doors, windows and rooms are approximate and no responsibility is taken for any error, omission or misstatements. These plans are not to scale and are for representation purposes only as defined by RICS Code of Measuring Practice and should be used as such by any prospective purchaser. Specifically no guarantee is given on total square footage of the property if quoted on this plan. Any figure given is for initial guidance only and should not be relied on as a basis of valuation.

A detached two-bedroom bungalow with front and rear gardens plus hard standing for additional parking to the rear. Internally this is a nice home with plenty of living space. There is a large kitchen breakfast room which runs through to your living room at the front of the property. Your main bedroom is a good double in size. The bathroom is not super modern but has been well adjusted for accessible usage. The second bedroom also has access onto a conservatory opening up on to your rear garden space. There is gas central heating and double glazing. Externally to the front you are well set back from the road and you have a wonderful garden space. The rear garden is smaller but equally pleasant. There is further hardstanding to the rear suitable for multiple cars if required. A great home that is well located in this popular residential area of Walton on Thames. Not far from local shops and amenities on the Terrace Road. Available Now, flexible on furniture at this stage. EPC Rating D.



AGENTS NOTES: These details do not constitute any part of an offer or contract. In issuing them we do not have any authority to give any warranty or representation whatsoever in respect of this property. These details are provided without any responsibility on our part or the part of the vendors. No statements in these details are to be relied upon as representations of fact and purchasers should satisfy themselves by inspection or otherwise as to the accuracy of the statements contained therein.

Equipment: We have not tested the equipment or central heating system mentioned in these particulars and purchasers are advised to satisfy themselves as to their working order and condition.

Measurements: Great care is taken when measuring but measurements should not be relied upon for ordering carpets, equipment, etc.