

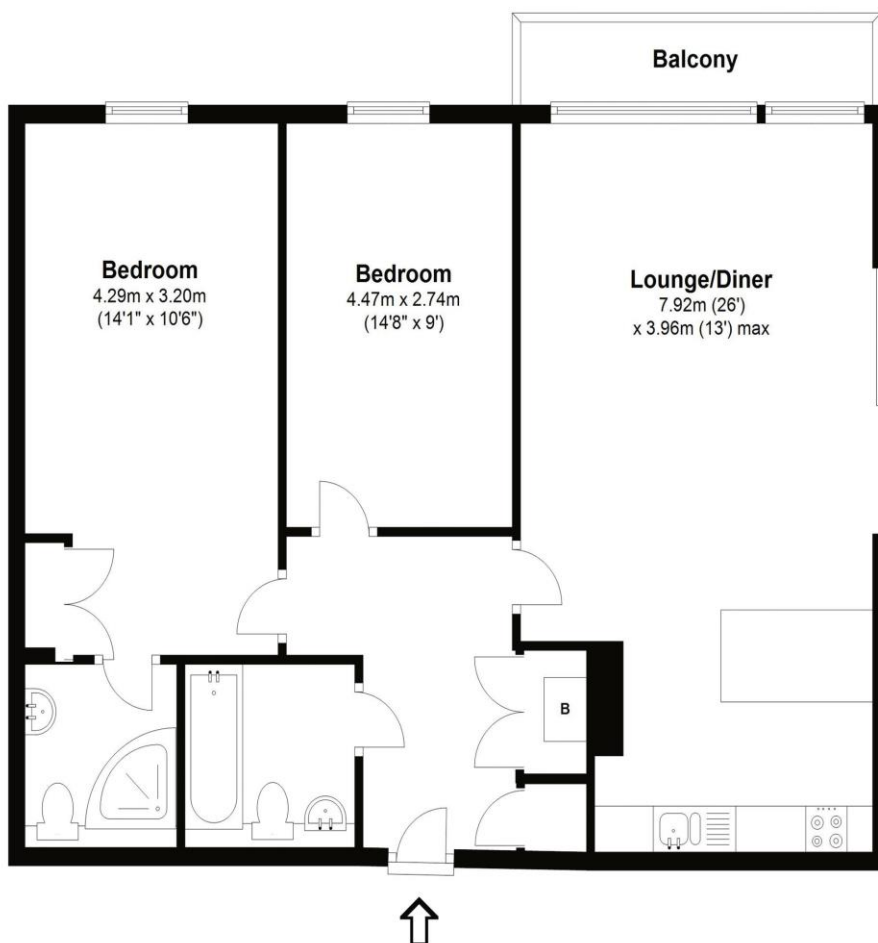


409 The Heart Walton-on-Thames Surrey KT12 1GE

£1750pcm + Initial deposit



Approximate gross internal floor area 73 Sq M 786 Sq Ft



Whilst every attempt has been made to ensure the accuracy of the floor plan contained here, measurements are approximate and no responsibility is taken for any error, omission, or mis-statement. The plan is for illustrative purposes only and should be used as such by any prospective purchaser.

A two-bedroom, two-bathroom apartment set on the fourth floor of the Heart of Walton development. Well-presented throughout, with a modern finish and neutral décor. Benefitting from underground parking for one car, 24-hour security on site and a concierge service.

Available unfurnished from the 24th of August 2024. EPC Rating C.



AGENTS NOTES: These details do not constitute any part of an offer or contract. In issuing them we do not have any authority to give any warranty or representation whatsoever in respect of this property. These details are provided without any responsibility on our part or the part of the vendors. No statements in these details are to be relied upon as representations of fact and purchasers should satisfy themselves by inspection or otherwise as to the accuracy of the statements contained therein.

Equipment: We have not tested the equipment or central heating system mentioned in these particulars and purchasers are advised to satisfy themselves as to their working order and condition.

Measurements: Great care is taken when measuring but measurements should not be relied upon for ordering carpets, equipment, etc.