

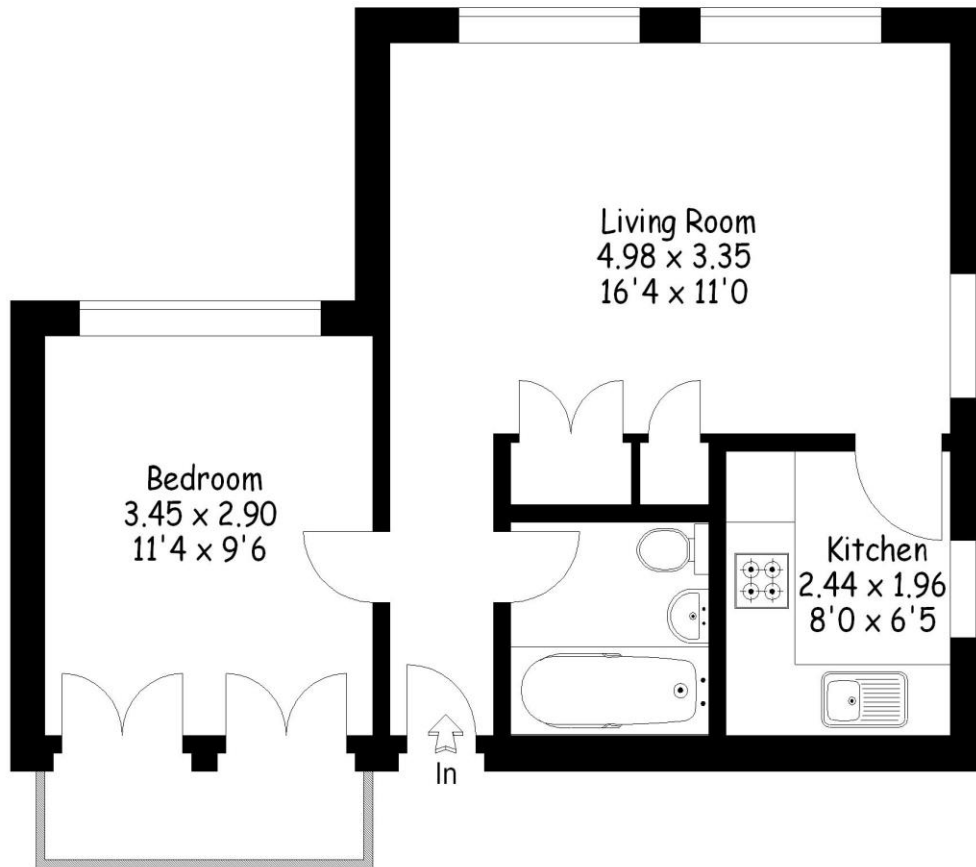


4 Nullisecundus Russell Road Walton-On-Thames Surrey KT12 2JZ

£1295pcm + Initial deposit



Approximate Gross External Area :- 49 sq m / 525 sq ft



First Floor

Illustration For Identification Purposes Only. Not To Scale
Job Ref. 27885

A one-bedroom, first floor apartment which has been modernised. Well-presented with bright spacious rooms including lounge, kitchen, bathroom, off-street parking and double glazing.

Local shops, high street, River Thames and leisure centre are all within good proximity.

Available from 2nd September 2024, unfurnished. EPC Rating C.



AGENTS NOTES: These details do not constitute any part of an offer or contract. In issuing them we do not have any authority to give any warranty or representation whatsoever in respect of this property. These details are provided without any responsibility on our part or the part of the vendors. No statements in these details are to be relied upon as representations of fact and purchasers should satisfy themselves by inspection or otherwise as to the accuracy of the statements contained therein.

Equipment: We have not tested the equipment or central heating system mentioned in these particulars and purchasers are advised to satisfy themselves as to their working order and condition.

Measurements: Great care is taken when measuring but measurements should not be relied upon for ordering carpets, equipment, etc.