

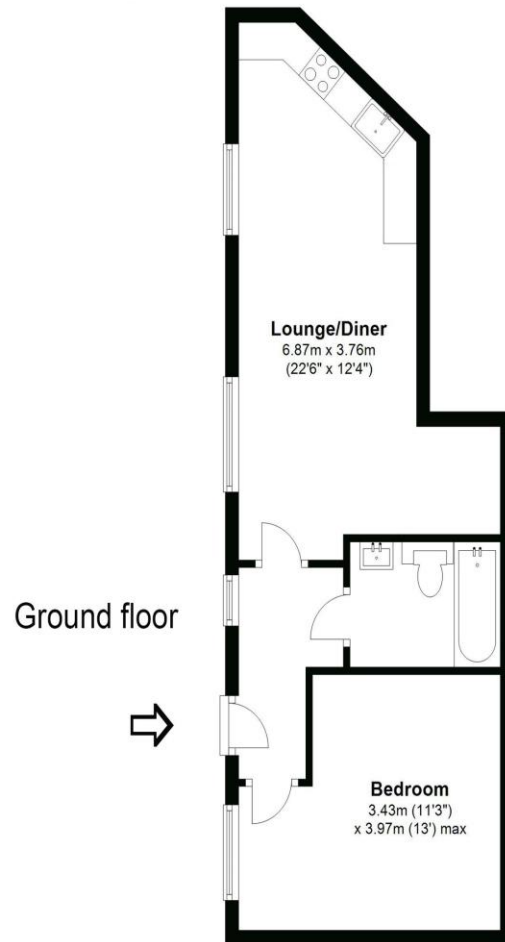


1 Kingsbridge House Kingsbridge Road Walton-On-Thames Surrey KT12 2BH

£1300pcm + Initial deposit



Approximate gross internal floor area 53 Sq M 570 Sq Ft



Whilst every attempt has been made to ensure the accuracy of the floor plan contained here, measurements are approximate and no responsibility is taken for any error, omission, or mis-statement. The plan is for illustrative purposes only and should be used as such by any prospective purchaser.

A recently converted one-bedroom ground floor maisonette, offering a modern finish throughout. There is gas central heating, double glazing, and a fully integrated kitchen. The bathroom is impressive and there is a lovely big bath with shower unit over. Located within this small cul-de-sac within the centre of town giving a good central base for the local amenities and the River Thames. Walton-on-Thames train station is just over a mile away.

Available 5th July 2024, unfurnished. EPC Rating C.



AGENTS NOTES: These details do not constitute any part of an offer or contract. In issuing them we do not have any authority to give any warranty or representation whatsoever in respect of this property. These details are provided without any responsibility on our part or the part of the vendors. No statements in these details are to be relied upon as representations of fact and purchasers should satisfy themselves by inspection or otherwise as to the accuracy of the statements contained therein.

Equipment: We have not tested the equipment or central heating system mentioned in these particulars and purchasers are advised to satisfy themselves as to their working order and condition.

Measurements: Great care is taken when measuring but measurements should not be relied upon for ordering carpets, equipment, etc.