

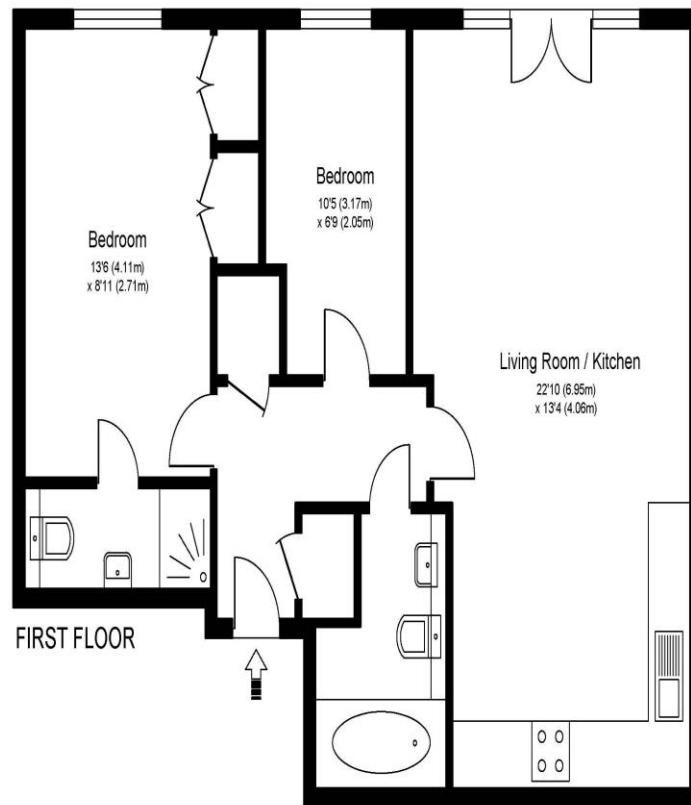


3 Weylands Court Corrie Road Addlestone Surrey KT15 2HT

£250,000



WEYLANDS COURT, CORRIE ROAD, ADDLESTONE, KT15



Approximate Gross Internal Floor Area: 61 m sq / 655 sq ft

Whilst every attempt has been made to ensure the accuracy of the floor plan contained here, measurements of doors, windows and rooms are approximate and no responsibility is taken for any error, omission or misstatements. These plans are not to scale and are for representation purposes only as defined by RICS Code of Measuring Practice and should be used as such by any prospective purchaser. Specifically no guarantee is given on total square footage of the property if quoted on this plan. Any figure given is for initial guidance only and should not be relied on as a basis of valuation.

For sale with no onward chain, a first floor two-bedroom two-bathroom apartment set in this popular gated development in Addlestone. Internally this is a good home with nice size rooms and a Juliet style balcony from the lounge room. There are two bedrooms, one of which has an en suite shower room. The family bathroom is a good size, and the living room is open plan to the kitchen. The home has been let out for a while and could do with some modernisation in place. The block itself feels safe and you have a secure entry system on the communal door. There is a residents car park, which is gated and where you have one allocated parking space. Well located in the centre of Addlestone not far from the town centre amenities including Tesco and Costa Coffee. Addlestone train station is just moments away and there is easy road access to the M25 junction 11. EPC Rating B.



AGENTS NOTES: These details do not constitute any part of an offer or contract. In issuing them we do not have any authority to give any warranty or representation whatsoever in respect of this property. These details are provided without any responsibility on our part or the part of the vendors. No statements in these details are to be relied upon as representations of fact and purchasers should satisfy themselves by inspection or otherwise as to the accuracy of the statements contained therein.

Equipment: We have not tested the equipment or central heating system mentioned in these particulars and purchasers are advised to satisfy themselves as to their working order and condition.

Measurements: Great care is taken when measuring but measurements should not be relied upon for ordering carpets, equipment, etc.