

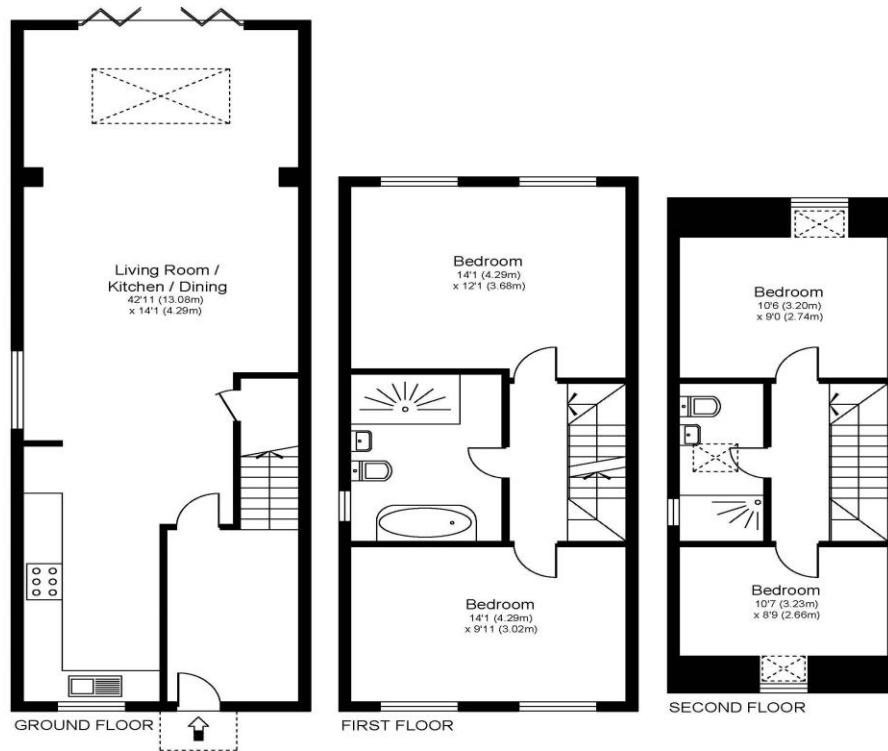


**37a Homefield Road Walton-On-Thames Surrey KT12 3RE**

**£625,000**



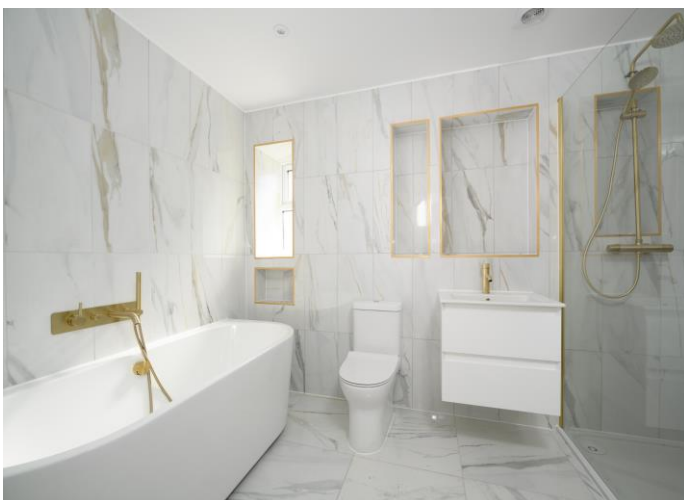
HOMEFIELD ROAD, WOT, KT12



Approximate Gross Internal Floor Area: 126 m sq / 1355 sq ft

Whilst every attempt has been made to ensure the accuracy of the floor plan contained here, measurements of doors, windows and rooms are approximate and no responsibility is taken for any error, omission or misstatements. These plans are not to scale and are for representation purposes only as defined by RICS Code of Measuring Practice and should be used as such by any prospective purchaser. Specifically no guarantee is given on total square footage of the property if quoted on this plan. Any figure given is for initial guidance only and should not be relied on as a basis of valuation.

A brand-new four-bedroom semi-detached home with 10 year building warranty and nice westerly facing rear gardens. Internally this is a great home with approx. 1400ft<sup>2</sup> + of space set across three floors. This home has four bedrooms with two bathrooms and a downstairs cloakroom. The living space is on the ground floor and opens onto the rear garden which is a good size and southwest facing. Located within a residential area of Walton on Thames, close to the Hershams and Molesey borders. Hershams train station is under a mile away and sits on the mainline to London Waterloo. EPC Rating B.



**AGENTS NOTES:** These details do not constitute any part of an offer or contract. In issuing them we do not have any authority to give any warranty or representation whatsoever in respect of this property. These details are provided without any responsibility on our part or the part of the vendors. No statements in these details are to be relied upon as representations of fact and purchasers should satisfy themselves by inspection or otherwise as to the accuracy of the statements contained therein.

**Equipment:** We have not tested the equipment or central heating system mentioned in these particulars and purchasers are advised to satisfy themselves as to their working order and condition.

**Measurements:** Great care is taken when measuring but measurements should not be relied upon for ordering carpets, equipment, etc.