



83a Ashley Road Walton-On-Thames Surrey KT12 1HH

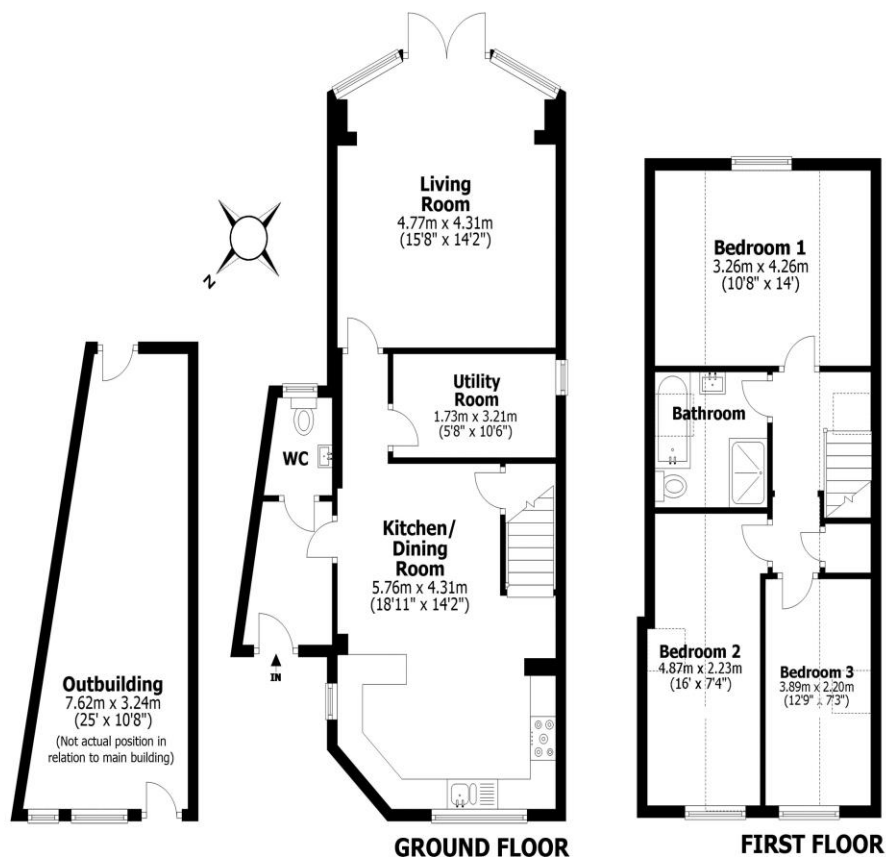
£650,000





Ashley Road, Walton on Thames, KT12

Total internal area (excluding outbuilding): approx. 104.8 sq. metres (1127.5 sq. feet)



This floorplan shows maximum dimensions, excluding small alcoves etc unless otherwise stated. Measurements are approximate and are given as a guide only. They are not intended to be used for carpet sizes, window furnishings, appliance sizes, or items of furniture.

****For Sale with No Onward Chain****. A three bedroomed detached house set on the prestigious Ashley Road. Newly renovated home close to Walton on Thames train station which gives access to London Waterloo in approximately 30 minutes, walking distance to many shops, eateries and a cinema. It also falls within popular school catchment areas. The accommodation comprises of a large open plan kitchen dining room. A cloakroom, a utility room and a lounge featuring a stunning vaulted bay window. Upstairs there are three double bedrooms, a family bathroom to include a bath and a separate shower unit. The South Easterly facing garden is designed for low maintenance leading to an out-building suitable for a large office/annex or playroom. Resident and visitor permit parking available. EPC Rating TBC.



AGENTS NOTES: These details do not constitute any part of an offer or contract. In issuing them we do not have any authority to give any warranty or representation whatsoever in respect of this property. These details are provided without any responsibility on our part or the part of the vendors. No statements in these details are to be relied upon as representations of fact and purchasers should satisfy themselves by inspection or otherwise as to the accuracy of the statements contained therein.

Equipment: We have not tested the equipment or central heating system mentioned in these particulars and purchasers are advised to satisfy themselves as to their working order and condition.

Measurements: Great care is taken when measuring but measurements should not be relied upon for ordering carpets, equipment, etc.