

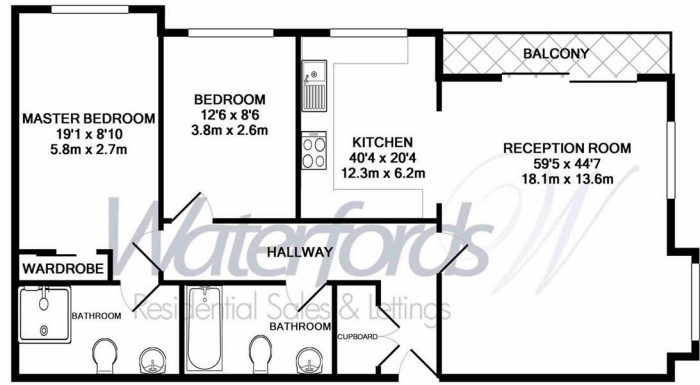


Flat 7

Belgravia Mansions | Frimley Road | Camberley | GU15 3BA

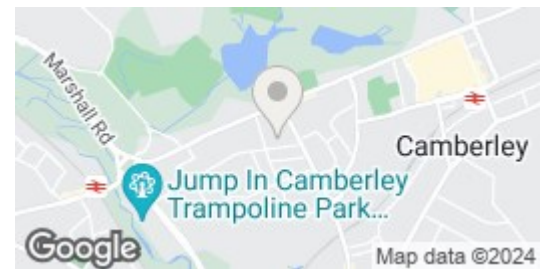
£1,400 PCM

Waterfords W
Residential Sales & Lettings



TOTAL APPROX. FLOOR AREA 837 SQ.FT. (77.8 SQ.M.)
 Whilst every attempt has been made to ensure the accuracy of the floor plan contained here, measurements of doors, windows, rooms and any other items are approximate and no responsibility is taken for any error, omission, or mis-statement. This plan is for illustrative purposes only and should be used as such by any prospective purchaser. The services, systems and appliances shown have not been tested and no guarantee as to their operability or efficiency can be given
 Made with Metropix ©2019

Energy Efficiency Rating		Current	Potential
Very energy efficient - lower running costs			
(92 plus)	A		
(81-91)	B		
(69-80)	C		
(55-68)	D		
(39-54)	E		
(21-38)	F		
(1-20)	G		
Not energy efficient - higher running costs			
England & Wales		79	86
EU Directive 2002/91/EC			



Description

A first floor luxury two bedroom flat, local amenities right outside with bus stop to town. close links to A30. M3 and M4. close proximity to town center Available 7th August 2024

Key features

- Two Double Bedrooms
- High Specification
- Balcony
- Council Tax Band D
- Minimum 12 Month let With a 6 Mont Break Clause
- Ensuite to Master and Further Bathroom
- Allocated Parking
- Available August 2024 On An Unfurnished Basis
- EPC C



35 Plough Road
 Hampshire
 GU46 7UW
 01276 903006

surreylettings@waterfords.co.uk
<https://www.waterfords.co.uk/>