



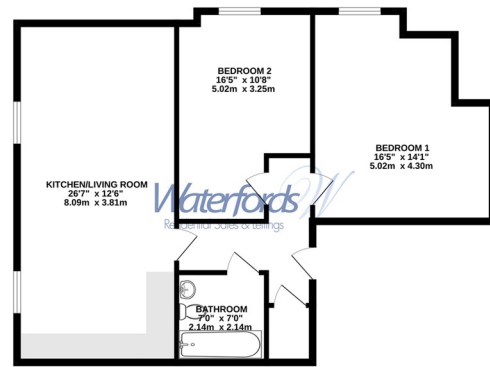
London Road | | Camberley | GU15 3JY

£1,550 PCM

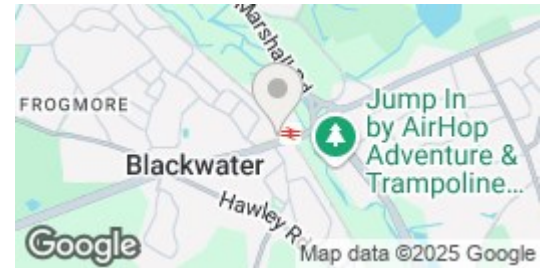
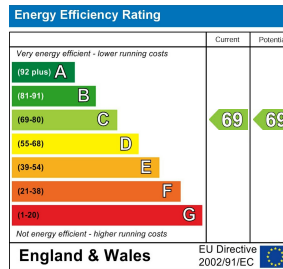
Waterfords
Residential Sales & Lettings



GROUND FLOOR
827 sq.ft. (76.8 sq.m.) approx.



TOTAL FLOOR AREA: 827 sq.ft. (76.8 sq.m.) approx.
Waterfords Limited has been made to ensure the accuracy of the floor area measurement. Measurements are taken to the internal face of the walls and are not intended to be used for legal purposes. The floor area is an approximation and should not be used for legal purposes. The floor area is an approximation and should not be used for legal purposes.



Description

Available to rent, this bright and modern two-bedroom apartment is located in the popular Cambridge Court development in Camberley. The property boasts a spacious open-plan living and dining area, a fully fitted kitchen, two well-proportioned bedrooms, and a contemporary bathroom. Further benefits include allocated parking at an extra cost PCM, secure entry. Ideally situated close to Camberley town centre, with easy access to shops, restaurants, and excellent transport links. Early viewing recommended.

Key features

- Modern Apartments Fished To A High Standard
- Town centre location
- High specification kitchen including white goods
- Unfurnished
- Parking Can Be Acquired For Additional Cost PCM
- Conversion from iconic Cambridge Hotel
- Minimum Term 12 Month Let
- Available June 2025
- Council tax band D
- EPC C



35 Plough Road
Hampshire
GU46 7UW
01276 903006

surreylettings@waterfords.co.uk
<https://www.waterfords.co.uk/>