



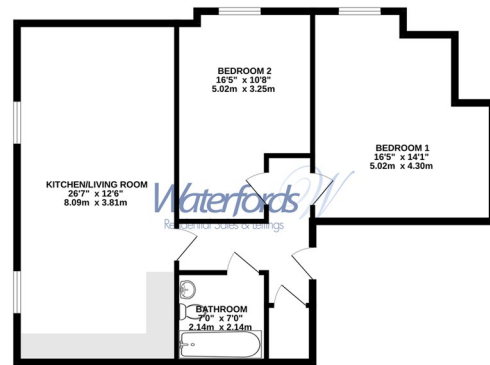
London Road | | Camberley | GU15 3JY

£1,625 PCM

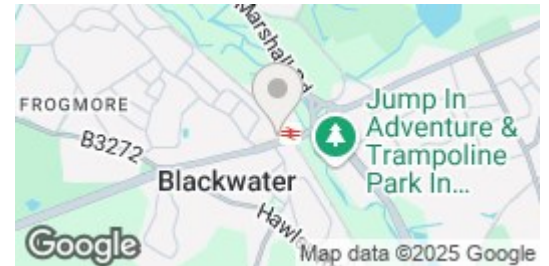
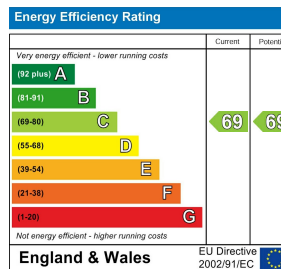
**Waterfords**  
Residential Sales & Lettings



GROUND FLOOR  
827 sq.ft. (76.8 sq.m.) approx.



TOTAL FLOOR AREA: 827 sq.ft. (76.8 sq.m.) approx.  
Waterfords Limited has been made to ensure the accuracy of the floor area measurement. Measurements are taken to the internal face of the walls and doors are open. The measurements are for the whole property. The floor area is not intended to be used as a basis for any other purpose. The floor area is not intended to be used as a basis for any other purpose. The floor area is not intended to be used as a basis for any other purpose.



## Description

Available to rent, this bright and modern two-bedroom apartment is located in the popular Cambridge Court development in Camberley. The property boasts a spacious open-plan living and dining area, a fully fitted kitchen, two well-proportioned bedrooms, and a contemporary bathroom. Further benefits include allocated parking, secure entry, and access to well-kept communal grounds. Ideally situated close to Camberley town centre, with easy access to shops, restaurants, and excellent transport links. Early viewing recommended.

## Key features

- Modern Apartments Fished To A High Standard
- Town centre location
- High specification kitchen including white goods
- Unfurnished
- Conversion from iconic Cambridge Hotel
- Minimum Term 12 Month Let
- Available June 2025
- Council tax band to be confirmed



35 Plough Road  
Hampshire  
GU46 7UW  
01276 903006

surreylettings@waterfords.co.uk  
<https://www.waterfords.co.uk/>