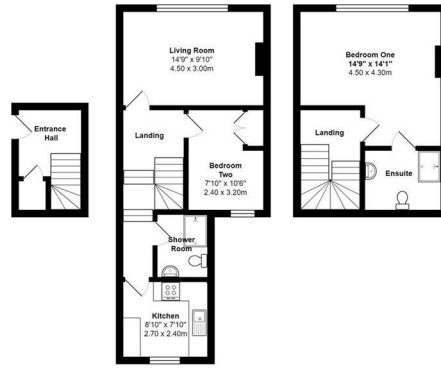




High Street | | Camberley | GU15 3RB

£1,350 (From) Per Calendar Month

**Waterfords**  
Residential Sales & Lettings



Total Area: 822 ft<sup>2</sup> ... 76.4 m<sup>2</sup>  
All measurements are approximate and for display purposes only

Energy Efficiency Rating		
	Current	Potential
Very energy efficient - lower running costs		
(92 plus) <b>A</b>		
(81-91) <b>B</b>		
(69-80) <b>C</b>		
(55-68) <b>D</b>		
(39-54) <b>E</b>		
(21-38) <b>F</b>		
(1-20) <b>G</b>		
Not energy efficient - higher running costs		
<b>England &amp; Wales</b>	EU Directive 2002/91/EC	



## Description

Beautifully Refurbished 2-Bedroom Duplex Maisonette on Camberley High Street

This stunning two-bedroom duplex maisonette, located right on Camberley High Street, has been fully refurbished throughout to a high standard. Spread over two spacious levels, it features a brand-new kitchen and bathroom, fresh décor, and modern finishes throughout. Enjoy the convenience of shops, restaurants, and excellent transport links right on your doorstep. A stylish and comfortable home—early viewing is highly recommended.

## Key features

- Spacious two-bedroom maisonette set over three levels
- Recently refurbished throughout with modern finishes
- Stylish, fully fitted kitchen
- Top-floor principal bedroom with en-suite shower room
- One allocated parking space included
- Private ground floor entrance for added privacy
- Bright living room on the first floor
- Family bathroom and first-floor bedroom
- Located directly on Camberley High Street
- Available immediately on an unfurnished basis



35 Plough Road  
Hampshire  
GU46 7UW  
01276 903006

surreylettings@waterfords.co.uk  
<https://www.waterfords.co.uk/>