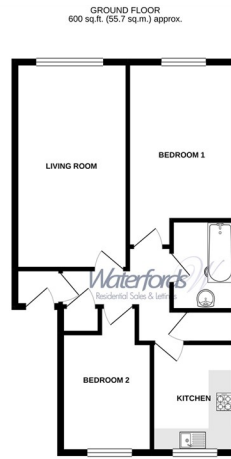




Gordon Court | 110 Gordon Road | Camberley | GU15 2JQ

£1,300 PCM

Waterfords
Residential Sales & Lettings



TOTAL FLOOR AREA: 1057 sq. ft. (97.7 sq.m.) approx.
Waterford's Residential Sales & Lettings

Energy Efficiency Rating		Current	Potential
Very energy efficient - lower running costs			
(92 plus)	A		
(81-91)	B		
(69-80)	C		
(55-68)	D		
(39-54)	E		
(21-38)	F		
(1-20)	G		
Not energy efficient - higher running costs			
England & Wales		79	81
		EU Directive 2002/91/EC	



Description

Just walking distance away from Camberley town centre and train station, is this two bedroom property. Benefiting from modern kitchen, modern bathroom and living room. Further benefits from communal garden area and parking. Available from 16th June 2025 on an unfurnished basis.

Key features

- Two Bedroom Apartment
- Parking
- Unfinished
- Minimum Term 12 Month Let
- EPC - C
- Unfurnished
- Close To Town Centre
- Available 16th June 2024
- Council Tax - C



35 Plough Road
Hampshire
GU46 7UW
01276 903006

surreylettings@waterfords.co.uk
<https://www.waterfords.co.uk/>