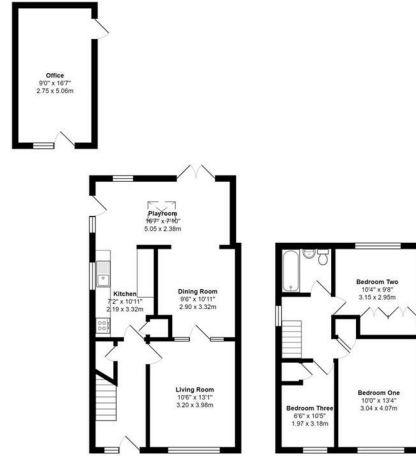




Yaverland Drive | | Bagshot | GU19 5DY

£1,850 Per Month

Waterfords W
Residential Sales & Lettings



Energy Efficiency Rating		Current	Potential
Very energy efficient - lower running costs			
(92 plus)	A		87
(81-91)	B		
(69-80)	C		66
(55-68)	D		
(39-54)	E		
(21-38)	F		
(1-20)	G		
Not energy efficient - higher running costs			
England & Wales		EU Directive 2002/91/EC	



Description

Immaculately presented three bedroom semi-detached family home found within this sought after part of Bagshot village overlooking woodland

Rarely available three bedroom semi-detached family home in this sought-after part of the village overlooking woodland and presented in good condition. .

Available from December 2024 on a unfurnished basis.

Key features

- Entrance Hall - Storage - Living Room - Dining Room
- Landscaped Private Rear Garden - Front Garden
- Open Plan Kitchen Breakfast Room With Doors To Garden
- Close To Crown Land & Bagshot Village Centre
- Unfurnished
- Three Good Sized Bedrooms - Modern Family Bathroom
- Highly Sought After Location
- Driveway Parking For Multiple Cars - Car Port - Garage
- Available From December 2024



35 Plough Road
Hampshire
GU46 7UW
01276 903006

surreylettings@waterfords.co.uk
<https://www.waterfords.co.uk/>