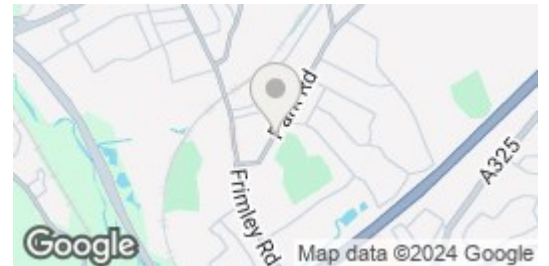
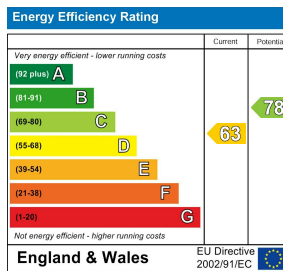
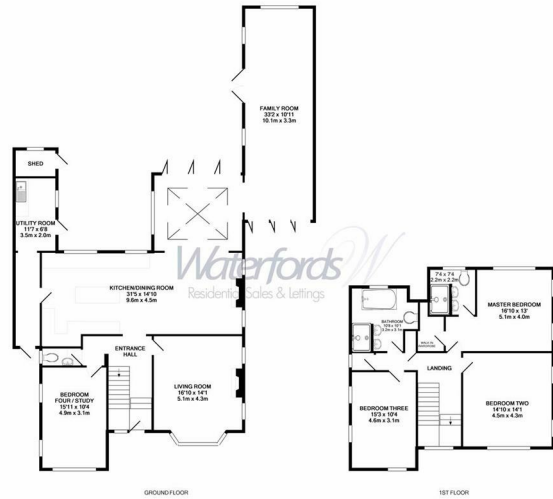




Park Road | Camberley | Surrey | GU15 2SR

£3,500 PCM

Waterfords W
Residential Sales & Lettings



Description

****DETACHED THREE TO FOUR BEDROOM FAMILY HOME TO RENT****

Located in the heart of Camberley is this well presented, three to four bedroom detached family home, offering ample and versatile living accommodation with a fantastic, large open plan kitchen/ dining area. The property is available from Mid October 2024 on an Unfurnished basis.

Upon entering the property you are greeted by the hallway with useful downstairs cloakroom, leading to a reception room which could be utilised as a bedroom, study or as necessary. The front facing, well proportioned living room features a bay window and feature fireplace, creating a cosy, private space.

Key features

- Three / Four Bedroom Detached Family Home
- Large Open Plan Modern Kitchen
- Ample Driveway Parking
- Minimum Term 6 Month Let
- Three / Four Reception Rooms
- Large Rear Garden with Patio Area
- Available Mid October 2024, Unfurnished



35 Plough Road
Hampshire
GU46 7UW
01276 903006

surreylettings@waterfords.co.uk
<https://www.waterfords.co.uk/>